

We encourage everyone to view the meeting live via YouTube.

Leavenworth County
Board of County Commissioners

Regular Meeting Agenda
300 Walnut Street, Suite 225
Leavenworth, KS 66048

June 29, 2022

9:00 a.m.

- I. CALL TO ORDER
- II. PLEDGE OF ALLEGIANCE/MOMENT OF SILENCE
- III. ROLL CALL
- IV. PUBLIC COMMENT: Public Comment shall be limited to 15 minutes at the beginning of each meeting for agenda items **only** and limited to three minutes per person. Comments at the end of the meeting shall be open to any topic of general interest to the Board of County Commissioners and limited to five minutes per person. There should be no expectation of interaction by the Commission during this time.

Anyone wishing to make comments either on items on the agenda or not are encouraged to provide their comments in writing no later than 8:00 AM the Monday immediately preceding the meeting. These comments will be included in the agenda packet for everyone to access and review. This allows the Commission to have time to fully consider input and request follow up if needed prior to the meeting.
- V. ADMINISTRATIVE BUSINESS:
- VI. CONSENT AGENDA: The items on the Consent Agenda are considered by staff to be routine business items. Approval of the items may be made by a single motion, seconded, and a majority vote with no separate discussion of any item listed. Should a member of the Governing Body desire to discuss any item, it will be removed from the Consent Agenda and considered separately.
 - a) Approval of the minutes of June 22, 2022
 - b) Approval of the schedule for the week July 4, 2022

- c) Approval of the check register
- d) Approve and sign the OCB's

VII. FORMAL BOARD ACTION:

- a) Consider a motion to approve Resolution 2022-13, a special use permit for Hidden Valley Wilderness Retreat.

VIII. PRESENTATIONS AND DISCUSSION ITEMS: presentations are materials of general concern where no action or vote is requested or anticipated.

- a) Fidler contract for Register of Deeds

IX. ADDITIONAL PUBLIC COMMENT IF NEEDED

X. ADJOURNMENT

LEAVENWORTH COUNTY COMMISSIONERS MEETING SCHEDULE

Monday, June 27, 2022

Tuesday, June 28, 2022

8:00 a.m. Workforce Partnership meeting

12:00 p.m. MARC meeting

Wednesday, June 29, 2022

9:00 a.m. Leavenworth County Commission meeting
• Commission Meeting Room, 300 Walnut, Leavenworth KS

7:00 p.m. Tomahawk Park Phase I Groundbreaking
• Parking at 155th and Chestnut, Basehor, KS

Thursday, June 30, 2022

Friday, July 1, 2022

ALL SUCH OTHER BUSINESS THAT MAY COME BEFORE THE COMMISSION

ALL MEETINGS ARE OPEN TO THE PUBLIC

COMMENTS SHOULD BE OF GENERAL INTEREST OF THE PUBLIC AND SUBJECT TO THE RULES OF DECORUM

*****June 22, 2022*****

The Board of County Commissioners met in a regular session on Wednesday, June 22, 2022. Commissioner Mike Smith, Commissioner Kaaz, Commissioner Culbertson, Commissioner Doug Smith and Commissioner Stieben are present; Also present: Mark Loughry, County Administrator; David Van Parys, Senior County Counselor; Bill Noll, Infrastructure and Construction Services; Krystal Voth, Planning and Zoning Director; John Richmeier, Leavenworth Times

Residents: Joe Herring

PUBLIC COMMENT:

There were no public comments.

ADMINISTRATIVE BUSINESS:

Mark Loughry indicated budget hearings will start July 6th.

Commissioner Culbertson requested the Board to create a resolution that requires high pressure gas lines that have become exposed be reburied by the providers.

It was the consensus of the Board to direct staff to draft a resolution.

Commissioner Doug Smith reported three Commissioners attended the Juneteenth parade on Saturday in which no county business was discussed.

A motion was made by Commissioner Culbertson and seconded by Commissioner Kaaz to accept the consent agenda for Wednesday, June 22, 2022 as presented.

Motion passed, 5-0.

David Van Parys presented Board Order 2022-2, directing Roger Marrs to initiate tax foreclosure procedures.

A motion was made by Commissioner Doug Smith and seconded by Commissioner Kaaz to approve Board Order 2022-2 directing tax counsel Roger Marrs to initiate tax lien foreclosure action upon the properties subject to foreclosure due to unpaid delinquent property taxes.

Motion passed, 5-0.

Bill Noll requested approval of the release of reimbursement funds for the removal of the K-45 bridge structure and K-56 culvert.

A motion was made by Commissioner Culbertson and seconded by Commissioner Doug Smith to approve the release of the reimbursement funds for the removal of the K-45 bridge structure and the K-56 culvert.

Motion passed, 5-0.

A motion was made by Commissioner Doug Smith and seconded by Commissioner Mike Smith to recess from open session and go into a closed executive session to discuss personnel matters of non-elected personnel as justified by K.S.A. 75-4319(b)(1) and to protect the privacy interests of the persons involved and that this Board resume open session in the meeting room at 9:35 a.m. Present in the executive session will be Commissioners Jeff Culbertson, Vicky Kaaz, Doug Smith, Mike Smith, Mike Stieben and others as invited by the Board.

Motion passed, 5-0.

The Board returned to regular session at 9:35 a.m. No action was taken and no decisions were made. The subject was limited to non-elected personnel.

Commissioner Kaaz will attend the KCATA meeting and attended the Leavenworth City Commission meeting.

Commissioner Mike Smith reported the construction on Main Street and Eisenhower will start soon.

Commissioner Doug Smith attended the Fairmount Township budget work session.

Commissioner Stieben participated in the State Lake cleanup and met with a council person from the city of Linwood. He also spoke at the Women's Republican meeting.

Commissioner Culbertson mentioned the Meals on Wheels benefit event will be July 16th at Haymarket Square.

***A motion was made by Commissioner Culbertson and seconded by Commissioner Kaaz to adjourn.
Motion passed, 5-0.***

The Board adjourned at 9:40 a.m.

LEAVENWORTH COUNTY COMMISSIONERS MEETING SCHEDULE

Monday, July 4, 2022 THE COURTHOUSE WILL BE CLOSED IN OBSERVANCE OF INDEPENDENCE DAY

Tuesday, July 5, 2022

Wednesday, July 6, 2022

9:00 a.m. Leavenworth County Commission meeting
• Commission Meeting Room, 300 Walnut, Leavenworth KS

Thursday, July 7, 2022

Friday, July 8, 2022

ALL SUCH OTHER BUSINESS THAT MAY COME BEFORE THE COMMISSION

ALL MEETINGS ARE OPEN TO THE PUBLIC

COMMENTS SHOULD BE OF GENERAL INTEREST OF THE PUBLIC AND SUBJECT TO THE RULES OF DECORUM

START DATE: 06/18/2022 END DATE: 06/24/2022

TYPES OF CHECKS SELECTED: * ALL TYPES

		P.O.NUMBER	CHECK#						
4120	ACE IMAGEWEAR		98953 AP	06/24/2022	2-001-5-53-215	4013-01994	UNIFORM RENTALS NOX	80.08	
4120	ACE IMAGEWEAR		98953 AP	06/24/2022	2-001-5-53-215	4013-01994	UNIFORM RENTALS NOX	66.88	
4120	ACE IMAGEWEAR		98953 AP	06/24/2022	2-001-5-53-215	4013-01994	UNIFORM RENTALS NOX	66.88	
4120	ACE IMAGEWEAR	328494	98953 AP	06/24/2022	2-001-5-53-215	4013-01994	UNIFORM RENTALS NOX	80.08	
4120	ACE IMAGEWEAR	328494	98953 AP	06/24/2022	2-001-5-53-215	4013-01994	UNIFORM RENTALS NOX	66.88	
4120	ACE IMAGEWEAR	328494	98953 AP	06/24/2022	2-001-5-53-215	4013-01994	UNIFORM RENTALS NOX	66.88	
							*** VENDOR	4120 TOTAL	427.68
799	ALBERTS		98955 AP	06/24/2022	2-001-5-07-207	REPL MOTOR IN A/C UNIT IN REC		470.00	
799	ALBERTS	328496	98955 AP	06/24/2022	2-001-5-07-207	REPL MOTOR IN A/C UNIT IN REC		470.00	
							*** VENDOR	799 TOTAL	940.00
249	AMBERWELL		98956 AP	06/24/2022	2-001-5-28-212	HR TESTING		398.00	
249	AMBERWELL	328497	98956 AP	06/24/2022	2-001-5-28-212	HR TESTING		398.00	
							*** VENDOR	249 TOTAL	796.00
340	BROOKS-JEFFREY		98960 AP	06/24/2022	2-001-5-07-262	LVSOKS RE-DIRECTED DOMAIN		55.00	
340	BROOKS-JEFFREY	328501	98960 AP	06/24/2022	2-001-5-07-262	LVSOKS RE-DIRECTED DOMAIN		55.00	
							*** VENDOR	340 TOTAL	110.00
36	CAHILL PAT		98962 AP	06/24/2022	2-001-5-09-231	COURT APPOINTED ATTORNEY		3,000.00	
36	CAHILL PAT	328503	98962 AP	06/24/2022	2-001-5-09-231	COURT APPOINTED ATTORNEY		3,000.00	
							*** VENDOR	36 TOTAL	6,000.00
362	CASAD BENJAMIN		98963 AP	06/24/2022	2-001-5-09-231	COURT APPOINTED ATTORNEY		3,000.00	
362	CASAD BENJAMIN	328504	98963 AP	06/24/2022	2-001-5-09-231	COURT APPOINTED ATTORNEY		3,000.00	
							*** VENDOR	362 TOTAL	6,000.00
24545	CDW GOVERN		98964 AP	06/24/2022	2-001-5-07-362	11106763 COMPUTER SUPLIES LVSO		266.00	
24545	CDW GOVERN		98964 AP	06/24/2022	2-001-5-07-362	11106763 COMPUTER SUPLIES LVSO		1,347.50	
24545	CDW GOVERN	328505	98964 AP	06/24/2022	2-001-5-07-362	11106763 COMPUTER SUPLIES LVSO		266.00	
24545	CDW GOVERN	328505	98964 AP	06/24/2022	2-001-5-07-362	11106763 COMPUTER SUPLIES LVSO		1,347.50	
							*** VENDOR	24545 TOTAL	3,227.00
648	COMMERCE BANK-COMMER		98967 AP	06/24/2022	2-001-5-01-212	BOCC:CHALLENGE COINS AND PRIZE		1,968.25	
648	COMMERCE BANK-COMMER		98967 AP	06/24/2022	2-001-5-01-212	BOCC:CHALLENGE COINS AND PRIZE		150.00	
648	COMMERCE BANK-COMMER	328506	98969 AP	06/24/2022	2-001-5-01-212	BOCC:CHALLENGE COINS AND PRIZE		1,968.25	
648	COMMERCE BANK-COMMER	328506	98969 AP	06/24/2022	2-001-5-01-212	BOCC:CHALLENGE COINS AND PRIZE		150.00	
648	COMMERCE BANK-COMMER		98965 AP	06/24/2022	2-001-5-02-212	IRON MOUNTAIN SHREDDING		32.31	
648	COMMERCE BANK-COMMER	328506	98969 AP	06/24/2022	2-001-5-02-212	IRON MOUNTAIN SHREDDING		32.31	
648	COMMERCE BANK-COMMER		98967 AP	06/24/2022	2-001-5-02-301	FOOD FOR EMPLOYEE PICNIC		200.76	
648	COMMERCE BANK-COMMER		98968 AP	06/24/2022	2-001-5-02-301	NH:BG,JC,SD2,EMPLOYEE LUNCH SU		156.92	
648	COMMERCE BANK-COMMER		98968 AP	06/24/2022	2-001-5-02-301	NH:BG,JC,SD2,EMPLOYEE LUNCH SU		156.00	
648	COMMERCE BANK-COMMER	328506	98969 AP	06/24/2022	2-001-5-02-301	FOOD FOR EMPLOYEE PICNIC		200.76	
648	COMMERCE BANK-COMMER	328506	98969 AP	06/24/2022	2-001-5-02-301	NH:BG,JC,SD2,EMPLOYEE LUNCH SU		156.92	
648	COMMERCE BANK-COMMER	328506	98969 AP	06/24/2022	2-001-5-02-301	NH:BG,JC,SD2,EMPLOYEE LUNCH SU		156.00	
648	COMMERCE BANK-COMMER		98967 AP	06/24/2022	2-001-5-04-211	ROD FIDLAR CONF LODGING		201.46	
648	COMMERCE BANK-COMMER	328506	98969 AP	06/24/2022	2-001-5-04-211	ROD FIDLAR CONF LODGING		201.46	
648	COMMERCE BANK-COMMER		98966 AP	06/24/2022	2-001-5-05-202	EMS VEH/BLDG MAINT,FIELD SUPPL		2.70	
648	COMMERCE BANK-COMMER	328506	98969 AP	06/24/2022	2-001-5-05-202	EMS VEH/BLDG MAINT,FIELD SUPPL		2.70	
648	COMMERCE BANK-COMMER		98965 AP	06/24/2022	2-001-5-05-203	EMS VEH/BLDG MAINT,FIELD SUPPL		82.00	
648	COMMERCE BANK-COMMER	328506	98969 AP	06/24/2022	2-001-5-05-203	EMS VEH/BLDG MAINT,FIELD SUPPL		82.00	
648	COMMERCE BANK-COMMER		98965 AP	06/24/2022	2-001-5-05-210	AT&T - EMS WIRELESS		261.20	
648	COMMERCE BANK-COMMER	328506	98969 AP	06/24/2022	2-001-5-05-210	AT&T - EMS WIRELESS		261.20	
648	COMMERCE BANK-COMMER		98966 AP	06/24/2022	2-001-5-05-212	EMS-MED QUIP MAINT/FIELD SUPPL		99.90	
648	COMMERCE BANK-COMMER	328506	98969 AP	06/24/2022	2-001-5-05-212	EMS-MED QUIP MAINT/FIELD SUPPL		99.90	
648	COMMERCE BANK-COMMER		98965 AP	06/24/2022	2-001-5-05-215	WAST MGMT - NOX WEED, EMS 9102		139.05	
648	COMMERCE BANK-COMMER	328506	98969 AP	06/24/2022	2-001-5-05-215	WAST MGMT - NOX WEED, EMS 9102		139.05	
648	COMMERCE BANK-COMMER		98966 AP	06/24/2022	2-001-5-05-216	EMS-MED QUIP MAINT/FIELD SUPPL		606.25	

START DATE: 06/18/2022 END DATE: 06/24/2022

TYPES OF CHECKS SELECTED: * ALL TYPES

			P.O.NUMBER	CHECK#					
648	COMMERCE BANK-COMMER	COMMERCE BANK-COMMERCIAL CARDS	328506	98969 AP	06/24/2022	2-001-5-05-216	EMS-MED QUIP MAINT/FIELD SUPPL	606.25	
648	COMMERCE BANK-COMMER	COMMERCE BANK-COMMERCIAL CARDS		98965 AP	06/24/2022	2-001-5-05-280	6-17 MIDWEST MOBILE RADIO	402.00	
648	COMMERCE BANK-COMMER	COMMERCE BANK-COMMERCIAL CARDS	328506	98969 AP	06/24/2022	2-001-5-05-280	6-17 MIDWEST MOBILE RADIO	402.00	
648	COMMERCE BANK-COMMER	COMMERCE BANK-COMMERCIAL CARDS		98966 AP	06/24/2022	2-001-5-05-282	EMS-MED QUIP MAINT/FIELD SUPPL	346.01	
648	COMMERCE BANK-COMMER	COMMERCE BANK-COMMERCIAL CARDS	328506	98969 AP	06/24/2022	2-001-5-05-282	EMS-MED QUIP MAINT/FIELD SUPPL	346.01	
648	COMMERCE BANK-COMMER	COMMERCE BANK-COMMERCIAL CARDS		98966 AP	06/24/2022	2-001-5-05-286	EMS-MED QUIP MAINT/FIELD SUPPL	2,026.00	
648	COMMERCE BANK-COMMER	COMMERCE BANK-COMMERCIAL CARDS	328506	98969 AP	06/24/2022	2-001-5-05-286	EMS-MED QUIP MAINT/FIELD SUPPL	2,026.00	
648	COMMERCE BANK-COMMER	COMMERCE BANK-COMMERCIAL CARDS		98966 AP	06/24/2022	2-001-5-05-301	EMS VEH/BLDG MAINT, FIELD SUPPL	23.44	
648	COMMERCE BANK-COMMER	COMMERCE BANK-COMMERCIAL CARDS		98966 AP	06/24/2022	2-001-5-05-301	EMS-MED QUIP MAINT/FIELD SUPPL	413.46	
648	COMMERCE BANK-COMMER	COMMERCE BANK-COMMERCIAL CARDS	328506	98969 AP	06/24/2022	2-001-5-05-301	EMS VEH/BLDG MAINT, FIELD SUPPL	23.44	
648	COMMERCE BANK-COMMER	COMMERCE BANK-COMMERCIAL CARDS	328506	98969 AP	06/24/2022	2-001-5-05-301	EMS-MED QUIP MAINT/FIELD SUPPL	413.46	
648	COMMERCE BANK-COMMER	COMMERCE BANK-COMMERCIAL CARDS		98966 AP	06/24/2022	2-001-5-05-306	EMS VEH/BLDG MAINT, FIELD SUPPL	2,053.65	
648	COMMERCE BANK-COMMER	COMMERCE BANK-COMMERCIAL CARDS	328506	98969 AP	06/24/2022	2-001-5-05-306	EMS VEH/BLDG MAINT, FIELD SUPPL	2,053.65	
648	COMMERCE BANK-COMMER	COMMERCE BANK-COMMERCIAL CARDS		98966 AP	06/24/2022	2-001-5-05-350	EMS-MED QUIP MAINT/FIELD SUPPL	357.99	
648	COMMERCE BANK-COMMER	COMMERCE BANK-COMMERCIAL CARDS	328506	98969 AP	06/24/2022	2-001-5-05-350	EMS-MED QUIP MAINT/FIELD SUPPL	357.99	
648	COMMERCE BANK-COMMER	COMMERCE BANK-COMMERCIAL CARDS		98966 AP	06/24/2022	2-001-5-05-381	EMS VEH/BLDG MAINT, FIELD SUPPL	218.36	
648	COMMERCE BANK-COMMER	COMMERCE BANK-COMMERCIAL CARDS		98966 AP	06/24/2022	2-001-5-05-381	EMS VEH/BLDG MAINT, FIELD SUPPL	20.20	
648	COMMERCE BANK-COMMER	COMMERCE BANK-COMMERCIAL CARDS		98966 AP	06/24/2022	2-001-5-05-381	EMS-MED QUIP MAINT/FIELD SUPPL	13,900.25	
648	COMMERCE BANK-COMMER	COMMERCE BANK-COMMERCIAL CARDS	328506	98969 AP	06/24/2022	2-001-5-05-381	EMS VEH/BLDG MAINT, FIELD SUPPL	218.36	
648	COMMERCE BANK-COMMER	COMMERCE BANK-COMMERCIAL CARDS	328506	98969 AP	06/24/2022	2-001-5-05-381	EMS VEH/BLDG MAINT, FIELD SUPPL	20.20	
648	COMMERCE BANK-COMMER	COMMERCE BANK-COMMERCIAL CARDS	328506	98969 AP	06/24/2022	2-001-5-05-381	EMS-MED QUIP MAINT/FIELD SUPPL	13,900.25	
648	COMMERCE BANK-COMMER	COMMERCE BANK-COMMERCIAL CARDS		98966 AP	06/24/2022	2-001-5-05-383	EMS VEH/BLDG MAINT, FIELD SUPPL	107.57	
648	COMMERCE BANK-COMMER	COMMERCE BANK-COMMERCIAL CARDS	328506	98969 AP	06/24/2022	2-001-5-05-383	EMS VEH/BLDG MAINT, FIELD SUPPL	107.57	
648	COMMERCE BANK-COMMER	COMMERCE BANK-COMMERCIAL CARDS		98965 AP	06/24/2022	2-001-5-06-222	FLEETHOSTER JUNE SERVICE	38.02	
648	COMMERCE BANK-COMMER	COMMERCE BANK-COMMERCIAL CARDS	328506	98969 AP	06/24/2022	2-001-5-06-222	FLEETHOSTER JUNE SERVICE	38.02	
648	COMMERCE BANK-COMMER	COMMERCE BANK-COMMERCIAL CARDS		98966 AP	06/24/2022	2-001-5-07-202	SHF-VEH MAINT, POL EQUIP, COMM O	1,100.00	
648	COMMERCE BANK-COMMER	COMMERCE BANK-COMMERCIAL CARDS	328506	98969 AP	06/24/2022	2-001-5-07-202	SHF-VEH MAINT, POL EQUIP, COMM O	1,100.00	
648	COMMERCE BANK-COMMER	COMMERCE BANK-COMMERCIAL CARDS		98965 AP	06/24/2022	2-001-5-07-208	WASTE MGMT - LVSO DUMPSTER	513.85	
648	COMMERCE BANK-COMMER	COMMERCE BANK-COMMERCIAL CARDS		98965 AP	06/24/2022	2-001-5-07-208	6-17 MIDWEST MOBILE RADIO	875.00	
648	COMMERCE BANK-COMMER	COMMERCE BANK-COMMERCIAL CARDS		98965 AP	06/24/2022	2-001-5-07-208	6-17 MIDWEST MOBILE RADIO	765.00	
648	COMMERCE BANK-COMMER	COMMERCE BANK-COMMERCIAL CARDS	328506	98969 AP	06/24/2022	2-001-5-07-208	WASTE MGMT - LVSO DUMPSTER	513.85	
648	COMMERCE BANK-COMMER	COMMERCE BANK-COMMERCIAL CARDS	328506	98969 AP	06/24/2022	2-001-5-07-208	6-17 MIDWEST MOBILE RADIO	875.00	
648	COMMERCE BANK-COMMER	COMMERCE BANK-COMMERCIAL CARDS	328506	98969 AP	06/24/2022	2-001-5-07-208	6-17 MIDWEST MOBILE RADIO	765.00	
648	COMMERCE BANK-COMMER	COMMERCE BANK-COMMERCIAL CARDS		98965 AP	06/24/2022	2-001-5-07-210	AT&T LVSO 1313	245.27	
648	COMMERCE BANK-COMMER	COMMERCE BANK-COMMERCIAL CARDS	328506	98969 AP	06/24/2022	2-001-5-07-210	AT&T LVSO 1313	245.27	
648	COMMERCE BANK-COMMER	COMMERCE BANK-COMMERCIAL CARDS		98966 AP	06/24/2022	2-001-5-07-213	SHF-VEH MAINT, POL EQUIP, COMM O	5,019.27	
648	COMMERCE BANK-COMMER	COMMERCE BANK-COMMERCIAL CARDS	328506	98969 AP	06/24/2022	2-001-5-07-213	SHF-VEH MAINT, POL EQUIP, COMM O	5,019.27	
648	COMMERCE BANK-COMMER	COMMERCE BANK-COMMERCIAL CARDS		98966 AP	06/24/2022	2-001-5-07-218	SHF-VEH MAINT, POL EQUIP, COMM O	356.35	
648	COMMERCE BANK-COMMER	COMMERCE BANK-COMMERCIAL CARDS	328506	98969 AP	06/24/2022	2-001-5-07-218	SHF-VEH MAINT, POL EQUIP, COMM O	356.35	
648	COMMERCE BANK-COMMER	COMMERCE BANK-COMMERCIAL CARDS		98965 AP	06/24/2022	2-001-5-07-219	CHARTER COMMUNICATIONS -MENTAL	182.00	
648	COMMERCE BANK-COMMER	COMMERCE BANK-COMMERCIAL CARDS		98966 AP	06/24/2022	2-001-5-07-219	SHF-VEH MAINT, POL EQUIP, COMM O	1,349.00	
648	COMMERCE BANK-COMMER	COMMERCE BANK-COMMERCIAL CARDS		98966 AP	06/24/2022	2-001-5-07-219	SHF-VEH MAINT, POL EQUIP, COMM O	352.08	
648	COMMERCE BANK-COMMER	COMMERCE BANK-COMMERCIAL CARDS	328506	98969 AP	06/24/2022	2-001-5-07-219	CHARTER COMMUNICATIONS -MENTAL	182.00	
648	COMMERCE BANK-COMMER	COMMERCE BANK-COMMERCIAL CARDS	328506	98969 AP	06/24/2022	2-001-5-07-219	SHF-VEH MAINT, POL EQUIP, COMM O	1,349.00	
648	COMMERCE BANK-COMMER	COMMERCE BANK-COMMERCIAL CARDS	328506	98969 AP	06/24/2022	2-001-5-07-219	SHF-VEH MAINT, POL EQUIP, COMM O	352.08	
648	COMMERCE BANK-COMMER	COMMERCE BANK-COMMERCIAL CARDS		98966 AP	06/24/2022	2-001-5-07-251	SHF-VEH MAINT, POL EQUIP, COMM O	241.10	
648	COMMERCE BANK-COMMER	COMMERCE BANK-COMMERCIAL CARDS	328506	98969 AP	06/24/2022	2-001-5-07-251	SHF-VEH MAINT, POL EQUIP, COMM O	241.10	
648	COMMERCE BANK-COMMER	COMMERCE BANK-COMMERCIAL CARDS		98966 AP	06/24/2022	2-001-5-07-301	SHF-VEH MAINT, POL EQUIP, COMM O	135.85	
648	COMMERCE BANK-COMMER	COMMERCE BANK-COMMERCIAL CARDS		98967 AP	06/24/2022	2-001-5-07-301	MW:OFFICE/JAIL SUPPLY, TECH, UNI	586.29	
648	COMMERCE BANK-COMMER	COMMERCE BANK-COMMERCIAL CARDS	328506	98969 AP	06/24/2022	2-001-5-07-301	SHF-VEH MAINT, POL EQUIP, COMM O	135.85	
648	COMMERCE BANK-COMMER	COMMERCE BANK-COMMERCIAL CARDS	328506	98969 AP	06/24/2022	2-001-5-07-301	MW:OFFICE/JAIL SUPPLY, TECH, UNI	586.29	
648	COMMERCE BANK-COMMER	COMMERCE BANK-COMMERCIAL CARDS		98967 AP	06/24/2022	2-001-5-07-302	MW:OFFICE/JAIL SUPPLY, TECH, UNI	17.12	

START DATE: 06/18/2022 END DATE: 06/24/2022

TYPES OF CHECKS SELECTED: * ALL TYPES

			P.O. NUMBER	CHECK#					
648	COMMERCE BANK-COMMER	COMMERCE BANK-COMMERCIAL CARDS	328506	98969 AP	06/24/2022	2-001-5-07-302	MW:OFFICE/JAIL SUPPLY, TECH, UNI	17.12	
648	COMMERCE BANK-COMMER	COMMERCE BANK-COMMERCIAL CARDS		98967 AP	06/24/2022	2-001-5-07-303	MW:OFFICE/JAIL SUPPLY, TECH, UNI	96.65	
648	COMMERCE BANK-COMMER	COMMERCE BANK-COMMERCIAL CARDS	328506	98969 AP	06/24/2022	2-001-5-07-303	MW:OFFICE/JAIL SUPPLY, TECH, UNI	96.65	
648	COMMERCE BANK-COMMER	COMMERCE BANK-COMMERCIAL CARDS		98966 AP	06/24/2022	2-001-5-07-305	SHF-VEH MAINT, POL EQUIP, COMM O	45.89	
648	COMMERCE BANK-COMMER	COMMERCE BANK-COMMERCIAL CARDS	328506	98969 AP	06/24/2022	2-001-5-07-305	SHF-VEH MAINT, POL EQUIP, COMM O	45.89	
648	COMMERCE BANK-COMMER	COMMERCE BANK-COMMERCIAL CARDS		98966 AP	06/24/2022	2-001-5-07-350	SHF-VEH MAINT, POL EQUIP, COMM O	41.50	
648	COMMERCE BANK-COMMER	COMMERCE BANK-COMMERCIAL CARDS		98966 AP	06/24/2022	2-001-5-07-350	SHF-VEH MAINT, POL EQUIP, COMM O	752.64	
648	COMMERCE BANK-COMMER	COMMERCE BANK-COMMERCIAL CARDS		98966 AP	06/24/2022	2-001-5-07-350	SHF-VEH MAINT, POL EQUIP, COMM O	505.82	
648	COMMERCE BANK-COMMER	COMMERCE BANK-COMMERCIAL CARDS		98967 AP	06/24/2022	2-001-5-07-350	MW:OFFICE/JAIL SUPPLY, TECH, UNI	491.82	
648	COMMERCE BANK-COMMER	COMMERCE BANK-COMMERCIAL CARDS	328506	98969 AP	06/24/2022	2-001-5-07-350	SHF-VEH MAINT, POL EQUIP, COMM O	41.50	
648	COMMERCE BANK-COMMER	COMMERCE BANK-COMMERCIAL CARDS	328506	98969 AP	06/24/2022	2-001-5-07-350	SHF-VEH MAINT, POL EQUIP, COMM O	752.64	
648	COMMERCE BANK-COMMER	COMMERCE BANK-COMMERCIAL CARDS	328506	98969 AP	06/24/2022	2-001-5-07-350	SHF-VEH MAINT, POL EQUIP, COMM O	505.82	
648	COMMERCE BANK-COMMER	COMMERCE BANK-COMMERCIAL CARDS	328506	98969 AP	06/24/2022	2-001-5-07-350	MW:OFFICE/JAIL SUPPLY, TECH, UNI	491.82	
648	COMMERCE BANK-COMMER	COMMERCE BANK-COMMERCIAL CARDS		98966 AP	06/24/2022	2-001-5-07-353	SHF-VEH MAINT, POL EQUIP, COMM O	2,274.24	
648	COMMERCE BANK-COMMER	COMMERCE BANK-COMMERCIAL CARDS		98967 AP	06/24/2022	2-001-5-07-353	MW:OFFICE/JAIL SUPPLY, TECH, UNI	117.40	
648	COMMERCE BANK-COMMER	COMMERCE BANK-COMMERCIAL CARDS	328506	98969 AP	06/24/2022	2-001-5-07-353	SHF-VEH MAINT, POL EQUIP, COMM O	2,274.24	
648	COMMERCE BANK-COMMER	COMMERCE BANK-COMMERCIAL CARDS	328506	98969 AP	06/24/2022	2-001-5-07-353	MW:OFFICE/JAIL SUPPLY, TECH, UNI	117.40	
648	COMMERCE BANK-COMMER	COMMERCE BANK-COMMERCIAL CARDS		98966 AP	06/24/2022	2-001-5-07-354	SHF-VEH MAINT, POL EQUIP, COMM O	2,311.41	
648	COMMERCE BANK-COMMER	COMMERCE BANK-COMMERCIAL CARDS	328506	98969 AP	06/24/2022	2-001-5-07-354	SHF-VEH MAINT, POL EQUIP, COMM O	2,311.41	
648	COMMERCE BANK-COMMER	COMMERCE BANK-COMMERCIAL CARDS		98967 AP	06/24/2022	2-001-5-07-355	MW:OFFICE/JAIL SUPPLY, TECH, UNI	22.36	
648	COMMERCE BANK-COMMER	COMMERCE BANK-COMMERCIAL CARDS	328506	98969 AP	06/24/2022	2-001-5-07-355	MW:OFFICE/JAIL SUPPLY, TECH, UNI	22.36	
648	COMMERCE BANK-COMMER	COMMERCE BANK-COMMERCIAL CARDS		98966 AP	06/24/2022	2-001-5-07-356	SHF-VEH MAINT, POL EQUIP, COMM O	32.90	
648	COMMERCE BANK-COMMER	COMMERCE BANK-COMMERCIAL CARDS	328506	98969 AP	06/24/2022	2-001-5-07-356	SHF-VEH MAINT, POL EQUIP, COMM O	32.90	
648	COMMERCE BANK-COMMER	COMMERCE BANK-COMMERCIAL CARDS		98966 AP	06/24/2022	2-001-5-07-357	SHF-VEH MAINT, POL EQUIP, COMM O	111.99	
648	COMMERCE BANK-COMMER	COMMERCE BANK-COMMERCIAL CARDS		98966 AP	06/24/2022	2-001-5-07-357	SHF-VEH MAINT, POL EQUIP, COMM O	168.43	
648	COMMERCE BANK-COMMER	COMMERCE BANK-COMMERCIAL CARDS		98967 AP	06/24/2022	2-001-5-07-357	MW:OFFICE/JAIL SUPPLY, TECH, UNI	144.10	
648	COMMERCE BANK-COMMER	COMMERCE BANK-COMMERCIAL CARDS	328506	98969 AP	06/24/2022	2-001-5-07-357	SHF-VEH MAINT, POL EQUIP, COMM O	111.99	
648	COMMERCE BANK-COMMER	COMMERCE BANK-COMMERCIAL CARDS	328506	98969 AP	06/24/2022	2-001-5-07-357	SHF-VEH MAINT, POL EQUIP, COMM O	168.43	
648	COMMERCE BANK-COMMER	COMMERCE BANK-COMMERCIAL CARDS	328506	98969 AP	06/24/2022	2-001-5-07-357	MW:OFFICE/JAIL SUPPLY, TECH, UNI	144.10	
648	COMMERCE BANK-COMMER	COMMERCE BANK-COMMERCIAL CARDS		98966 AP	06/24/2022	2-001-5-07-359	SHF-VEH MAINT, POL EQUIP, COMM O	315.57	
648	COMMERCE BANK-COMMER	COMMERCE BANK-COMMERCIAL CARDS		98967 AP	06/24/2022	2-001-5-07-359	MW:OFFICE/JAIL SUPPLY, TECH, UNI	77.68	
648	COMMERCE BANK-COMMER	COMMERCE BANK-COMMERCIAL CARDS	328506	98969 AP	06/24/2022	2-001-5-07-359	SHF-VEH MAINT, POL EQUIP, COMM O	315.57	
648	COMMERCE BANK-COMMER	COMMERCE BANK-COMMERCIAL CARDS	328506	98969 AP	06/24/2022	2-001-5-07-359	MW:OFFICE/JAIL SUPPLY, TECH, UNI	77.68	
648	COMMERCE BANK-COMMER	COMMERCE BANK-COMMERCIAL CARDS		98966 AP	06/24/2022	2-001-5-07-362	SHF-VEH MAINT, POL EQUIP, COMM O	1,282.92	
648	COMMERCE BANK-COMMER	COMMERCE BANK-COMMERCIAL CARDS		98967 AP	06/24/2022	2-001-5-07-362	MW:OFFICE/JAIL SUPPLY, TECH, UNI	151.14	
648	COMMERCE BANK-COMMER	COMMERCE BANK-COMMERCIAL CARDS	328506	98969 AP	06/24/2022	2-001-5-07-362	SHF-VEH MAINT, POL EQUIP, COMM O	1,282.92	
648	COMMERCE BANK-COMMER	COMMERCE BANK-COMMERCIAL CARDS	328506	98969 AP	06/24/2022	2-001-5-07-362	MW:OFFICE/JAIL SUPPLY, TECH, UNI	151.14	
648	COMMERCE BANK-COMMER	COMMERCE BANK-COMMERCIAL CARDS		98965 AP	06/24/2022	2-001-5-11-202	CO ATTY-NADCP CONF REGISTRATIO	795.00	
648	COMMERCE BANK-COMMER	COMMERCE BANK-COMMERCIAL CARDS		98966 AP	06/24/2022	2-001-5-11-202	CO ATTY:WITNESS TVL, KCDAA CONF	350.00	
648	COMMERCE BANK-COMMER	COMMERCE BANK-COMMERCIAL CARDS	328506	98969 AP	06/24/2022	2-001-5-11-202	CO ATTY-NADCP CONF REGISTRATIO	795.00	
648	COMMERCE BANK-COMMER	COMMERCE BANK-COMMERCIAL CARDS	328506	98969 AP	06/24/2022	2-001-5-11-202	CO ATTY:WITNESS TVL, KCDAA CONF	350.00	
648	COMMERCE BANK-COMMER	COMMERCE BANK-COMMERCIAL CARDS		98966 AP	06/24/2022	2-001-5-11-203	CO ATTY:WITNESS TVL, KCDAA CONF	25.00	
648	COMMERCE BANK-COMMER	COMMERCE BANK-COMMERCIAL CARDS	328506	98969 AP	06/24/2022	2-001-5-11-203	CO ATTY:WITNESS TVL, KCDAA CONF	25.00	
648	COMMERCE BANK-COMMER	COMMERCE BANK-COMMERCIAL CARDS		98965 AP	06/24/2022	2-001-5-11-205	KTA CHARGES	10.45	
648	COMMERCE BANK-COMMER	COMMERCE BANK-COMMERCIAL CARDS	328506	98969 AP	06/24/2022	2-001-5-11-205	KTA CHARGES	10.45	
648	COMMERCE BANK-COMMER	COMMERCE BANK-COMMERCIAL CARDS		98966 AP	06/24/2022	2-001-5-11-213	CO ATTY:WITNESS TVL, KCDAA CONF	471.70	
648	COMMERCE BANK-COMMER	COMMERCE BANK-COMMERCIAL CARDS		98967 AP	06/24/2022	2-001-5-11-213	CO ATTY:NT-SUPPLIES, WITNESS CO	907.58	
648	COMMERCE BANK-COMMER	COMMERCE BANK-COMMERCIAL CARDS	328506	98969 AP	06/24/2022	2-001-5-11-213	CO ATTY:WITNESS TVL, KCDAA CONF	471.70	
648	COMMERCE BANK-COMMER	COMMERCE BANK-COMMERCIAL CARDS	328506	98969 AP	06/24/2022	2-001-5-11-213	CO ATTY:NT-SUPPLIES, WITNESS CO	907.58	
648	COMMERCE BANK-COMMER	COMMERCE BANK-COMMERCIAL CARDS		98965 AP	06/24/2022	2-001-5-11-253	FLEETHOSTER JUNE SERVICE	19.95	
648	COMMERCE BANK-COMMER	COMMERCE BANK-COMMERCIAL CARDS	328506	98969 AP	06/24/2022	2-001-5-11-253	FLEETHOSTER JUNE SERVICE	19.95	
648	COMMERCE BANK-COMMER	COMMERCE BANK-COMMERCIAL CARDS		98966 AP	06/24/2022	2-001-5-11-301	CO ATTY:WITNESS TVL, KCDAA CONF	599.94	

TYPES OF CHECKS SELECTED: * ALL TYPES

	P.O.NUMBER	CHECK#								
648			COMMERCE BANK-COMMER	COMMERCE BANK-COMMERCIAL CARDS		98967 AP	06/24/2022	2-001-5-11-301	CO ATTY:NT-SUPPLIES,WITNESS CO	1,034.93
648	328506	98969 AP	COMMERCE BANK-COMMER	COMMERCE BANK-COMMERCIAL CARDS		98969 AP	06/24/2022	2-001-5-11-301	CO ATTY:WITNESS TVL,KCDAA CONF	599.94
648	328506	98969 AP	COMMERCE BANK-COMMER	COMMERCE BANK-COMMERCIAL CARDS		98969 AP	06/24/2022	2-001-5-11-301	CO ATTY:NT-SUPPLIES,WITNESS CO	1,034.93
648			COMMERCE BANK-COMMER	COMMERCE BANK-COMMERCIAL CARDS		98965 AP	06/24/2022	2-001-5-14-247	IRON MOUNTAIN SHREDDING	29.96
648	328506	98969 AP	COMMERCE BANK-COMMER	COMMERCE BANK-COMMERCIAL CARDS		98969 AP	06/24/2022	2-001-5-14-247	IRON MOUNTAIN SHREDDING	29.96
648			COMMERCE BANK-COMMER	COMMERCE BANK-COMMERCIAL CARDS		98966 AP	06/24/2022	2-001-5-18-213	IS:ACCESS FEES, OFFICE SUPPLIE	2,221.63
648	328506	98969 AP	COMMERCE BANK-COMMER	COMMERCE BANK-COMMERCIAL CARDS		98969 AP	06/24/2022	2-001-5-18-213	IS:ACCESS FEES, OFFICE SUPPLIE	2,221.63
648			COMMERCE BANK-COMMER	COMMERCE BANK-COMMERCIAL CARDS		98967 AP	06/24/2022	2-001-5-18-301	IS:ACCESS FEES, OFFICE SUPPLIE	51.48
648	328506	98969 AP	COMMERCE BANK-COMMER	COMMERCE BANK-COMMERCIAL CARDS		98969 AP	06/24/2022	2-001-5-18-301	IS:ACCESS FEES, OFFICE SUPPLIE	51.48
648			COMMERCE BANK-COMMER	COMMERCE BANK-COMMERCIAL CARDS		98965 AP	06/24/2022	2-001-5-19-203	DIST CT(SC)ATTORNEY REGISTRATI	920.00
648	328506	98969 AP	COMMERCE BANK-COMMER	COMMERCE BANK-COMMERCIAL CARDS		98969 AP	06/24/2022	2-001-5-19-203	DIST CT(SC)ATTORNEY REGISTRATI	920.00
648			COMMERCE BANK-COMMER	COMMERCE BANK-COMMERCIAL CARDS		98967 AP	06/24/2022	2-001-5-19-217	DIST CT LEGAL PUBLICATION - JC	369.60
648	328506	98969 AP	COMMERCE BANK-COMMER	COMMERCE BANK-COMMERCIAL CARDS		98969 AP	06/24/2022	2-001-5-19-217	DIST CT LEGAL PUBLICATION - JC	369.60
648			COMMERCE BANK-COMMER	COMMERCE BANK-COMMERCIAL CARDS		98965 AP	06/24/2022	2-001-5-19-220	IRON MOUNTAIN SHREDDING	159.20
648	328506	98969 AP	COMMERCE BANK-COMMER	COMMERCE BANK-COMMERCIAL CARDS		98969 AP	06/24/2022	2-001-5-19-220	IRON MOUNTAIN SHREDDING	159.20
648			COMMERCE BANK-COMMER	COMMERCE BANK-COMMERCIAL CARDS		98965 AP	06/24/2022	2-001-5-19-301	DIST CT(SC)ATTORNEY REGISTRATI	122.40
648			COMMERCE BANK-COMMER	COMMERCE BANK-COMMERCIAL CARDS		98966 AP	06/24/2022	2-001-5-19-301	DIST CT OFFICE SUPPLIES(CD)	188.95
648	328506	98969 AP	COMMERCE BANK-COMMER	COMMERCE BANK-COMMERCIAL CARDS		98969 AP	06/24/2022	2-001-5-19-301	DIST CT(SC)ATTORNEY REGISTRATI	122.40
648	328506	98969 AP	COMMERCE BANK-COMMER	COMMERCE BANK-COMMERCIAL CARDS		98969 AP	06/24/2022	2-001-5-19-301	DIST CT OFFICE SUPPLIES(CD)	188.95
648			COMMERCE BANK-COMMER	COMMERCE BANK-COMMERCIAL CARDS		98968 AP	06/24/2022	2-001-5-21-300	HEALTH:ELC2,MED SUPPLY,FP,WIC,	855.33
648	328506	98969 AP	COMMERCE BANK-COMMER	COMMERCE BANK-COMMERCIAL CARDS		98969 AP	06/24/2022	2-001-5-21-300	HEALTH:ELC2,MED SUPPLY,FP,WIC,	855.33
648			COMMERCE BANK-COMMER	COMMERCE BANK-COMMERCIAL CARDS		98969 AP	06/24/2022	2-001-5-28-215	HR SALES TAX REFUND, OPEN ENRO	10.38-
648	328506	98969 AP	COMMERCE BANK-COMMER	COMMERCE BANK-COMMERCIAL CARDS		98969 AP	06/24/2022	2-001-5-28-215	HR SALES TAX REFUND, OPEN ENRO	10.38-
648			COMMERCE BANK-COMMER	COMMERCE BANK-COMMERCIAL CARDS		98969 AP	06/24/2022	2-001-5-28-223	HR SALES TAX REFUND, OPEN ENRO	363.58
648	328506	98969 AP	COMMERCE BANK-COMMER	COMMERCE BANK-COMMERCIAL CARDS		98969 AP	06/24/2022	2-001-5-28-223	HR SALES TAX REFUND, OPEN ENRO	363.58
648			COMMERCE BANK-COMMER	COMMERCE BANK-COMMERCIAL CARDS		98965 AP	06/24/2022	2-001-5-28-301	IRON MOUNTAIN SHREDDING	14.98
648	328506	98969 AP	COMMERCE BANK-COMMER	COMMERCE BANK-COMMERCIAL CARDS		98969 AP	06/24/2022	2-001-5-28-301	IRON MOUNTAIN SHREDDING	14.98
648			COMMERCE BANK-COMMER	COMMERCE BANK-COMMERCIAL CARDS		98965 AP	06/24/2022	2-001-5-31-230	FLEETHOSTER JUNE SERVICE	59.85
648	328506	98969 AP	COMMERCE BANK-COMMER	COMMERCE BANK-COMMERCIAL CARDS		98969 AP	06/24/2022	2-001-5-31-230	FLEETHOSTER JUNE SERVICE	59.85
648			COMMERCE BANK-COMMER	COMMERCE BANK-COMMERCIAL CARDS		98967 AP	06/24/2022	2-001-5-31-290	BG:FURNITURE,PUMP,BLDG COMOMDI	302.81
648			COMMERCE BANK-COMMER	COMMERCE BANK-COMMERCIAL CARDS		98968 AP	06/24/2022	2-001-5-31-290	NH:BG,JC,SD2,EMPLOYEE LUNCH SU	99.73
648	328506	98969 AP	COMMERCE BANK-COMMER	COMMERCE BANK-COMMERCIAL CARDS		98969 AP	06/24/2022	2-001-5-31-290	BG:FURNITURE,PUMP,BLDG COMOMDI	302.81
648	328506	98969 AP	COMMERCE BANK-COMMER	COMMERCE BANK-COMMERCIAL CARDS		98969 AP	06/24/2022	2-001-5-31-290	NH:BG,JC,SD2,EMPLOYEE LUNCH SU	99.73
648			COMMERCE BANK-COMMER	COMMERCE BANK-COMMERCIAL CARDS		98968 AP	06/24/2022	2-001-5-31-297	BG:FURNITURE,PUMP,BLDG COMOMDI	65.00
648	328506	98969 AP	COMMERCE BANK-COMMER	COMMERCE BANK-COMMERCIAL CARDS		98969 AP	06/24/2022	2-001-5-31-297	BG:FURNITURE,PUMP,BLDG COMOMDI	65.00
648			COMMERCE BANK-COMMER	COMMERCE BANK-COMMERCIAL CARDS		98968 AP	06/24/2022	2-001-5-31-312	BG:FURNITURE,PUMP,BLDG COMOMDI	1,851.18
648			COMMERCE BANK-COMMER	COMMERCE BANK-COMMERCIAL CARDS		98968 AP	06/24/2022	2-001-5-31-312	NH:BG,JC,SD2,EMPLOYEE LUNCH SU	1,263.15
648	328506	98969 AP	COMMERCE BANK-COMMER	COMMERCE BANK-COMMERCIAL CARDS		98969 AP	06/24/2022	2-001-5-31-312	BG:FURNITURE,PUMP,BLDG COMOMDI	1,851.18
648	328506	98969 AP	COMMERCE BANK-COMMER	COMMERCE BANK-COMMERCIAL CARDS		98969 AP	06/24/2022	2-001-5-31-312	NH:BG,JC,SD2,EMPLOYEE LUNCH SU	1,263.15
648			COMMERCE BANK-COMMER	COMMERCE BANK-COMMERCIAL CARDS		98968 AP	06/24/2022	2-001-5-31-315	NH:BG,JC,SD2,EMPLOYEE LUNCH SU	102.42
648	328506	98969 AP	COMMERCE BANK-COMMER	COMMERCE BANK-COMMERCIAL CARDS		98969 AP	06/24/2022	2-001-5-31-315	NH:BG,JC,SD2,EMPLOYEE LUNCH SU	102.42
648			COMMERCE BANK-COMMER	COMMERCE BANK-COMMERCIAL CARDS		98968 AP	06/24/2022	2-001-5-31-318	NH:BG,JC,SD2,EMPLOYEE LUNCH SU	160.94
648	328506	98969 AP	COMMERCE BANK-COMMER	COMMERCE BANK-COMMERCIAL CARDS		98969 AP	06/24/2022	2-001-5-31-318	NH:BG,JC,SD2,EMPLOYEE LUNCH SU	160.94
648			COMMERCE BANK-COMMER	COMMERCE BANK-COMMERCIAL CARDS		98968 AP	06/24/2022	2-001-5-31-390	BG:FURNITURE,PUMP,BLDG COMOMDI	1,190.48
648	328506	98969 AP	COMMERCE BANK-COMMER	COMMERCE BANK-COMMERCIAL CARDS		98969 AP	06/24/2022	2-001-5-31-390	BG:FURNITURE,PUMP,BLDG COMOMDI	1,190.48
648			COMMERCE BANK-COMMER	COMMERCE BANK-COMMERCIAL CARDS		98968 AP	06/24/2022	2-001-5-31-391	BG:FURNITURE,PUMP,BLDG COMOMDI	138.56
648	328506	98969 AP	COMMERCE BANK-COMMER	COMMERCE BANK-COMMERCIAL CARDS		98969 AP	06/24/2022	2-001-5-31-391	BG:FURNITURE,PUMP,BLDG COMOMDI	138.56
648			COMMERCE BANK-COMMER	COMMERCE BANK-COMMERCIAL CARDS		98968 AP	06/24/2022	2-001-5-32-209	BG:FURNITURE,PUMP,BLDG COMOMDI	134.46
648	328506	98969 AP	COMMERCE BANK-COMMER	COMMERCE BANK-COMMERCIAL CARDS		98969 AP	06/24/2022	2-001-5-32-209	BG:FURNITURE,PUMP,BLDG COMOMDI	134.46
648			COMMERCE BANK-COMMER	COMMERCE BANK-COMMERCIAL CARDS		98968 AP	06/24/2022	2-001-5-32-296	BG:FURNITURE,PUMP,BLDG COMOMDI	1,354.10
648	328506	98969 AP	COMMERCE BANK-COMMER	COMMERCE BANK-COMMERCIAL CARDS		98969 AP	06/24/2022	2-001-5-32-296	BG:FURNITURE,PUMP,BLDG COMOMDI	1,354.10
648			COMMERCE BANK-COMMER	COMMERCE BANK-COMMERCIAL CARDS		98968 AP	06/24/2022	2-001-5-32-297	BG:FURNITURE,PUMP,BLDG COMOMDI	411.35

WARRANT REGISTER - BY FUND / VENDOR
START DATE: 06/18/2022 END DATE: 06/24/2022

TYPES OF CHECKS SELECTED: * ALL TYPES

			P.O.NUMBER	CHECK#						
648	COMMERCE BANK-COMMER	COMMERCE BANK-COMMERCIAL CARDS	328506	98969 AP	06/24/2022	2-001-5-32-297	BG:FURNITURE,PUMP,BLDG COMOMDI	411.35		
648	COMMERCE BANK-COMMER	COMMERCE BANK-COMMERCIAL CARDS		98968 AP	06/24/2022	2-001-5-32-391	BG:FURNITURE,PUMP,BLDG COMOMDI	2,807.46		
648	COMMERCE BANK-COMMER	COMMERCE BANK-COMMERCIAL CARDS		98968 AP	06/24/2022	2-001-5-32-391	NH:BG,JC,SD2,EMPLOYEE LUNCH SU	354.84		
648	COMMERCE BANK-COMMER	COMMERCE BANK-COMMERCIAL CARDS		98969 AP	06/24/2022	2-001-5-32-391	BG:JC MAINT SUPPLIES	304.14		
648	COMMERCE BANK-COMMER	COMMERCE BANK-COMMERCIAL CARDS		98969 AP	06/24/2022	2-001-5-32-391	JC:JC BLDG MAINT SUPPLIES	86.84		
648	COMMERCE BANK-COMMER	COMMERCE BANK-COMMERCIAL CARDS	328506	98969 AP	06/24/2022	2-001-5-32-391	BG:FURNITURE,PUMP,BLDG COMOMDI	2,807.46		
648	COMMERCE BANK-COMMER	COMMERCE BANK-COMMERCIAL CARDS	328506	98969 AP	06/24/2022	2-001-5-32-391	NH:BG,JC,SD2,EMPLOYEE LUNCH SU	354.84		
648	COMMERCE BANK-COMMER	COMMERCE BANK-COMMERCIAL CARDS	328506	98969 AP	06/24/2022	2-001-5-32-391	BG:JC MAINT SUPPLIES	304.14		
648	COMMERCE BANK-COMMER	COMMERCE BANK-COMMERCIAL CARDS	328506	98969 AP	06/24/2022	2-001-5-32-391	JC:JC BLDG MAINT SUPPLIES	86.84		
648	COMMERCE BANK-COMMER	COMMERCE BANK-COMMERCIAL CARDS		98967 AP	06/24/2022	2-001-5-41-201	APPRAISER-COPIES,OFFICE & COMP	85.13		
648	COMMERCE BANK-COMMER	COMMERCE BANK-COMMERCIAL CARDS	328506	98969 AP	06/24/2022	2-001-5-41-201	APPRAISER-COPIES,OFFICE & COMP	85.13		
648	COMMERCE BANK-COMMER	COMMERCE BANK-COMMERCIAL CARDS		98966 AP	06/24/2022	2-001-5-41-211	APPRAISER-LODGING,KTA KCAA CON	251.08		
648	COMMERCE BANK-COMMER	COMMERCE BANK-COMMERCIAL CARDS	328506	98969 AP	06/24/2022	2-001-5-41-211	APPRAISER-LODGING,KTA KCAA CON	251.08		
648	COMMERCE BANK-COMMER	COMMERCE BANK-COMMERCIAL CARDS		98965 AP	06/24/2022	2-001-5-41-271	FLEETHOSTER JUNE SERVICE	138.71		
648	COMMERCE BANK-COMMER	COMMERCE BANK-COMMERCIAL CARDS	328506	98969 AP	06/24/2022	2-001-5-41-271	FLEETHOSTER JUNE SERVICE	138.71		
648	COMMERCE BANK-COMMER	COMMERCE BANK-COMMERCIAL CARDS		98967 AP	06/24/2022	2-001-5-41-301	APPRAISER-COPIES,OFFICE & COMP	258.86		
648	COMMERCE BANK-COMMER	COMMERCE BANK-COMMERCIAL CARDS	328506	98969 AP	06/24/2022	2-001-5-41-301	APPRAISER-COPIES,OFFICE & COMP	258.86		
648	COMMERCE BANK-COMMER	COMMERCE BANK-COMMERCIAL CARDS		98967 AP	06/24/2022	2-001-5-41-371	APPRAISER-COPIES,OFFICE & COMP	333.98		
648	COMMERCE BANK-COMMER	COMMERCE BANK-COMMERCIAL CARDS	328506	98969 AP	06/24/2022	2-001-5-41-371	APPRAISER-COPIES,OFFICE & COMP	333.98		
648	COMMERCE BANK-COMMER	COMMERCE BANK-COMMERCIAL CARDS		98967 AP	06/24/2022	2-001-5-42-293	GIS:TONER,ESRI CREDITS	200.00		
648	COMMERCE BANK-COMMER	COMMERCE BANK-COMMERCIAL CARDS	328506	98969 AP	06/24/2022	2-001-5-42-293	GIS:TONER,ESRI CREDITS	200.00		
648	COMMERCE BANK-COMMER	COMMERCE BANK-COMMERCIAL CARDS		98967 AP	06/24/2022	2-001-5-42-301	GIS:TONER,ESRI CREDITS	714.96		
648	COMMERCE BANK-COMMER	COMMERCE BANK-COMMERCIAL CARDS	328506	98969 AP	06/24/2022	2-001-5-42-301	GIS:TONER,ESRI CREDITS	714.96		
648	COMMERCE BANK-COMMER	COMMERCE BANK-COMMERCIAL CARDS		98965 AP	06/24/2022	2-001-5-49-211	KTA CHARGES	4.25		
648	COMMERCE BANK-COMMER	COMMERCE BANK-COMMERCIAL CARDS	328506	98969 AP	06/24/2022	2-001-5-49-211	KTA CHARGES	4.25		
648	COMMERCE BANK-COMMER	COMMERCE BANK-COMMERCIAL CARDS		98967 AP	06/24/2022	2-001-5-49-301	LUNCH FOR REDISTRICTING MAP WO	52.92		
648	COMMERCE BANK-COMMER	COMMERCE BANK-COMMERCIAL CARDS	328506	98969 AP	06/24/2022	2-001-5-49-301	LUNCH FOR REDISTRICTING MAP WO	52.92		
648	COMMERCE BANK-COMMER	COMMERCE BANK-COMMERCIAL CARDS		98965 AP	06/24/2022	2-001-5-53-207	WAST MGMT - NOX WEED, EMS 9102	94.61		
648	COMMERCE BANK-COMMER	COMMERCE BANK-COMMERCIAL CARDS	328506	98969 AP	06/24/2022	2-001-5-53-207	WAST MGMT - NOX WEED, EMS 9102	94.61		
648	COMMERCE BANK-COMMER	COMMERCE BANK-COMMERCIAL CARDS		98965 AP	06/24/2022	2-001-5-53-220	FLEETHOSTER JUNE SERVICE	118.76		
648	COMMERCE BANK-COMMER	COMMERCE BANK-COMMERCIAL CARDS	328506	98969 AP	06/24/2022	2-001-5-53-220	FLEETHOSTER JUNE SERVICE	118.76		
							*** VENDOR	648 TOTAL		134,176.48
22610	DEVLIN KATIE	KATIE DEVLIN		98970 AP	06/24/2022	2-001-5-11-203	REIMB KS SUPREME CT DUES2022/2	200.00		
22610	DEVLIN KATIE	KATIE DEVLIN	328507	98970 AP	06/24/2022	2-001-5-11-203	REIMB KS SUPREME CT DUES2022/2	200.00		
							*** VENDOR	22610 TOTAL		400.00
86	EVERGY	EVERGY KANSAS CENTRAL INC	328466	98948 AP	06/22/2022	2-001-5-05-215	ELEC SVC EMS ADMIN	675.86		
5824	FRONTIER	FORENSIC MEDICAL HOLDINGS OF K		98972 AP	06/24/2022	2-001-5-13-271	INV 20096 MAY AUTOPSIES, ETC	2,100.00		
5824	FRONTIER	FORENSIC MEDICAL HOLDINGS OF K		98972 AP	06/24/2022	2-001-5-13-271	INV 20096 MAY AUTOPSIES, ETC	2,100.00		
5824	FRONTIER	FORENSIC MEDICAL HOLDINGS OF K		98972 AP	06/24/2022	2-001-5-13-271	INV 20096 MAY AUTOPSIES, ETC	2,100.00		
5824	FRONTIER	FORENSIC MEDICAL HOLDINGS OF K		98972 AP	06/24/2022	2-001-5-13-271	INV 20096 MAY AUTOPSIES, ETC	2,100.00		
5824	FRONTIER	FORENSIC MEDICAL HOLDINGS OF K		98972 AP	06/24/2022	2-001-5-13-271	INV 20096 MAY AUTOPSIES, ETC	2,100.00		
5824	FRONTIER	FORENSIC MEDICAL HOLDINGS OF K		98972 AP	06/24/2022	2-001-5-13-271	INV 20096 MAY AUTOPSIES, ETC	2,100.00		
5824	FRONTIER	FORENSIC MEDICAL HOLDINGS OF K		98972 AP	06/24/2022	2-001-5-13-271	INV 20096 MAY AUTOPSIES, ETC	2,100.00		
5824	FRONTIER	FORENSIC MEDICAL HOLDINGS OF K		98972 AP	06/24/2022	2-001-5-13-271	INV 20096 MAY AUTOPSIES, ETC	2,100.00		
5824	FRONTIER	FORENSIC MEDICAL HOLDINGS OF K		98972 AP	06/24/2022	2-001-5-13-271	INV 20096 MAY AUTOPSIES, ETC	650.00		
5824	FRONTIER	FORENSIC MEDICAL HOLDINGS OF K		98972 AP	06/24/2022	2-001-5-13-271	INV 20096 MAY AUTOPSIES, ETC	50.00		
5824	FRONTIER	FORENSIC MEDICAL HOLDINGS OF K		98972 AP	06/24/2022	2-001-5-13-271	INV 20096 MAY AUTOPSIES, ETC	50.00		
5824	FRONTIER	FORENSIC MEDICAL HOLDINGS OF K		98972 AP	06/24/2022	2-001-5-13-271	INV 20096 MAY AUTOPSIES, ETC	50.00		
5824	FRONTIER	FORENSIC MEDICAL HOLDINGS OF K		98972 AP	06/24/2022	2-001-5-13-271	INV 20096 MAY AUTOPSIES, ETC	50.00		
5824	FRONTIER	FORENSIC MEDICAL HOLDINGS OF K		98972 AP	06/24/2022	2-001-5-13-271	INV 20096 MAY AUTOPSIES, ETC	50.00		
5824	FRONTIER	FORENSIC MEDICAL HOLDINGS OF K		98972 AP	06/24/2022	2-001-5-13-271	INV 20096 MAY AUTOPSIES, ETC	25.00		
5824	FRONTIER	FORENSIC MEDICAL HOLDINGS OF K		98972 AP	06/24/2022	2-001-5-13-271	INV 20096 MAY AUTOPSIES, ETC	25.00		
5824	FRONTIER	FORENSIC MEDICAL HOLDINGS OF K		98972 AP	06/24/2022	2-001-5-13-271	INV 20096 MAY AUTOPSIES, ETC	25.00		

START DATE: 06/18/2022 END DATE: 06/24/2022

TYPES OF CHECKS SELECTED: * ALL TYPES

			P.O.NUMBER	CHECK#					
971	GALLS	GALLS	328511	98974 AP	06/24/2022	2-001-5-07-350	5289255 LVSO UNIFORMS	256.77	
971	GALLS	GALLS	328511	98974 AP	06/24/2022	2-001-5-07-350	5289255 LVSO UNIFORMS	1,266.19	
971	GALLS	GALLS	328511	98974 AP	06/24/2022	2-001-5-07-350	5289255 LVSO UNIFORMS	78.63	
971	GALLS	GALLS	328511	98974 AP	06/24/2022	2-001-5-07-350	5289255 LVSO UNIFORMS	920.01	
*** VENDOR								971 TOTAL	6,614.68
617	GEIGER	GEIGER READY MIX		98975 AP	06/24/2022	2-001-5-32-391	4295 KANSAS RIVER GRAVEL (JC)	240.00	
617	GEIGER	GEIGER READY MIX	328512	98975 AP	06/24/2022	2-001-5-32-391	4295 KANSAS RIVER GRAVEL (JC)	240.00	
*** VENDOR								617 TOTAL	480.00
16080	GT DISTRIBUTORS	GT DISTRIBUTORS		98976 AP	06/24/2022	2-001-5-07-353	POLICE EQUIPMENT CUST 009074	168.75	
16080	GT DISTRIBUTORS	GT DISTRIBUTORS		98976 AP	06/24/2022	2-001-5-07-353	POLICE EQUIPMENT CUST 009074	947.50	
16080	GT DISTRIBUTORS	GT DISTRIBUTORS		98976 AP	06/24/2022	2-001-5-07-353	POLICE EQUIPMENT CUST 009074	874.60	
16080	GT DISTRIBUTORS	GT DISTRIBUTORS		98976 AP	06/24/2022	2-001-5-07-353	POLICE EQUIPMENT CUST 009074	79.90	
16080	GT DISTRIBUTORS	GT DISTRIBUTORS	328513	98976 AP	06/24/2022	2-001-5-07-353	POLICE EQUIPMENT CUST 009074	168.75	
16080	GT DISTRIBUTORS	GT DISTRIBUTORS	328513	98976 AP	06/24/2022	2-001-5-07-353	POLICE EQUIPMENT CUST 009074	947.50	
16080	GT DISTRIBUTORS	GT DISTRIBUTORS	328513	98976 AP	06/24/2022	2-001-5-07-353	POLICE EQUIPMENT CUST 009074	874.60	
16080	GT DISTRIBUTORS	GT DISTRIBUTORS	328513	98976 AP	06/24/2022	2-001-5-07-353	POLICE EQUIPMENT CUST 009074	79.90	
*** VENDOR								16080 TOTAL	4,141.50
10303	INTERSTATE ALL BATTE	INTERSTATE ALL BATTERY CENTER		98980 AP	06/24/2022	2-001-5-07-301	C90430003041 RADIO AND OFFICE	292.10	
10303	INTERSTATE ALL BATTE	INTERSTATE ALL BATTERY CENTER	328517	98980 AP	06/24/2022	2-001-5-07-301	C90430003041 RADIO AND OFFICE	292.10	
*** VENDOR								10303 TOTAL	584.20
523	JARBALO JU	KENNETH W SHOEMAKER		98982 AP	06/24/2022	2-001-5-31-320	BLDG&GRNDS L REAR COMB LAMP AS	476.52	
523	JARBALO JU	KENNETH W SHOEMAKER	328519	98982 AP	06/24/2022	2-001-5-31-320	BLDG&GRNDS L REAR COMB LAMP AS	476.52	
*** VENDOR								523 TOTAL	953.04
26400	KANSAS GAS	KANSAS GAS SERVICE	328467	98949 AP	06/22/2022	2-001-5-14-220	510614745 1628631 73 GAS TRANS	775.28	
26400	KANSAS GAS	KANSAS GAS SERVICE	328467	98949 AP	06/22/2022	2-001-5-32-392	510614745 1628631 73 GAS TRANS	968.34	
26400	KANSAS GAS	KANSAS GAS SERVICE	328467	98949 AP	06/22/2022	2-001-5-33-392	510614745 1562996 18 GAS TRANS	130.54	
26400	KANSAS GAS	KANSAS GAS SERVICE	328467	98949 AP	06/22/2022	2-001-5-33-392	510614745 1562996 18 GAS TRANS	75.91	
*** VENDOR								26400 TOTAL	1,950.07
251	KC PATHOLOGY PA	KC PATHOLOGY PA		98983 AP	06/24/2022	2-001-5-07-219	INMATE MEDICAL BILL	292.76	
251	KC PATHOLOGY PA	KC PATHOLOGY PA		98983 AP	06/24/2022	2-001-5-07-219	INMATE MEDICAL BILL	9.37	
251	KC PATHOLOGY PA	KC PATHOLOGY PA	328520	98983 AP	06/24/2022	2-001-5-07-219	INMATE MEDICAL BILL	292.76	
251	KC PATHOLOGY PA	KC PATHOLOGY PA	328520	98983 AP	06/24/2022	2-001-5-07-219	INMATE MEDICAL BILL	9.37	
*** VENDOR								251 TOTAL	604.26
4755	LEAV PAPER	LEAVENWORTH PAPER AND OFFICE S		98985 AP	06/24/2022	2-001-5-07-301	LV SHERIFF OFFICE AND JAIL SUP	31.96	
4755	LEAV PAPER	LEAVENWORTH PAPER AND OFFICE S		98985 AP	06/24/2022	2-001-5-07-301	LV SHERIFF OFFICE AND JAIL SUP	28.97	
4755	LEAV PAPER	LEAVENWORTH PAPER AND OFFICE S		98985 AP	06/24/2022	2-001-5-07-301	LV SHERIFF OFFICE AND JAIL SUP	51.96	
4755	LEAV PAPER	LEAVENWORTH PAPER AND OFFICE S	328522	98985 AP	06/24/2022	2-001-5-07-301	LV SHERIFF OFFICE AND JAIL SUP	31.96	
4755	LEAV PAPER	LEAVENWORTH PAPER AND OFFICE S	328522	98985 AP	06/24/2022	2-001-5-07-301	LV SHERIFF OFFICE AND JAIL SUP	28.97	
4755	LEAV PAPER	LEAVENWORTH PAPER AND OFFICE S	328522	98985 AP	06/24/2022	2-001-5-07-301	LV SHERIFF OFFICE AND JAIL SUP	51.96	
4755	LEAV PAPER	LEAVENWORTH PAPER AND OFFICE S		98985 AP	06/24/2022	2-001-5-07-359	LV SHERIFF OFFICE AND JAIL SUP	304.40	
4755	LEAV PAPER	LEAVENWORTH PAPER AND OFFICE S	328522	98985 AP	06/24/2022	2-001-5-07-359	LV SHERIFF OFFICE AND JAIL SUP	304.40	
4755	LEAV PAPER	LEAVENWORTH PAPER AND OFFICE S		98985 AP	06/24/2022	2-001-5-19-301	DIST CT CSO OFFICE SUPPLIES	991.70	
4755	LEAV PAPER	LEAVENWORTH PAPER AND OFFICE S	328522	98985 AP	06/24/2022	2-001-5-19-301	DIST CT CSO OFFICE SUPPLIES	991.70	
*** VENDOR								4755 TOTAL	2,817.98
485	MASTER'S TOUCH	THE MASTER'S TOUCH LLC		98986 AP	06/24/2022	2-001-5-02-213	ESTIMATED POSTAGE FOR 2022 SB1	10,665.00	
485	MASTER'S TOUCH	THE MASTER'S TOUCH LLC	328523	98986 AP	06/24/2022	2-001-5-02-213	ESTIMATED POSTAGE FOR 2022 SB1	10,665.00	
*** VENDOR								485 TOTAL	21,330.00
597	MID WEST TAC	MID WEST TAC LLC		98987 AP	06/24/2022	2-001-5-07-202	LV SHERIFF INSTRUCTOR TRAINING	625.00	
597	MID WEST TAC	MID WEST TAC LLC	328524	98987 AP	06/24/2022	2-001-5-07-202	LV SHERIFF INSTRUCTOR TRAINING	625.00	
*** VENDOR								597 TOTAL	1,250.00
2059	MIDWEST OFFICE TECH	MIDWEST OFFICE TECHNOLOGY INC		98988 AP	06/24/2022	2-001-5-01-201	OPK595_K BOCC MONTHLY MAINT/CO	204.61	
2059	MIDWEST OFFICE TECH	MIDWEST OFFICE TECHNOLOGY INC	328525	98988 AP	06/24/2022	2-001-5-01-201	OPK595_K BOCC MONTHLY MAINT/CO	204.61	

TYPES OF CHECKS SELECTED: * ALL TYPES

		P.O.NUMBER	CHECK#						
						*** VENDOR	2059 TOTAL		409.22
458	ROAD & BRIDGE	LEAV CO PUBLIC WORKS	98992 AP	06/24/2022	2-001-5-14-333	BG MAY FUEL		209.73	
458	ROAD & BRIDGE	LEAV CO PUBLIC WORKS	98992 AP	06/24/2022	2-001-5-14-333	BG MAY FUEL		68.98	
458	ROAD & BRIDGE	LEAV CO PUBLIC WORKS	98992 AP	06/24/2022	2-001-5-14-333	BG MAY FUEL		50.89	
458	ROAD & BRIDGE	LEAV CO PUBLIC WORKS	328529	98992 AP	06/24/2022	2-001-5-14-333	BG MAY FUEL	209.73	
458	ROAD & BRIDGE	LEAV CO PUBLIC WORKS	328529	98992 AP	06/24/2022	2-001-5-14-333	BG MAY FUEL	68.98	
458	ROAD & BRIDGE	LEAV CO PUBLIC WORKS	328529	98992 AP	06/24/2022	2-001-5-14-333	BG MAY FUEL	50.89	
						*** VENDOR	458 TOTAL		659.20
1042	ROCK RIVER ARMS INC	ROCK RIVER ARMS INC	98993 AP	06/24/2022	2-001-5-07-356	66048-LCSO GUN REPAIR PARTS		138.00	
1042	ROCK RIVER ARMS INC	ROCK RIVER ARMS INC	328530	98993 AP	06/24/2022	66048-LCSO GUN REPAIR PARTS		138.00	
						*** VENDOR	1042 TOTAL		276.00
29720	SCHWINN EL	SCHWINN ELECTRIC	98994 AP	06/24/2022	2-001-5-32-209	JC GFCI INSTALL		117.00	
29720	SCHWINN EL	SCHWINN ELECTRIC	328531	98994 AP	06/24/2022	JC GFCI INSTALL		117.00	
						*** VENDOR	29720 TOTAL		234.00
8350	STANLEY CONVERGENT	STANLEY CONVERGENT SECURITY SO	98995 AP	06/24/2022	2-001-5-07-262	10700928 REPL NEW UNIT SO73796		324.00	
8350	STANLEY CONVERGENT	STANLEY CONVERGENT SECURITY SO	328532	98995 AP	06/24/2022	10700928 REPL NEW UNIT SO73796		324.00	
						*** VENDOR	8350 TOTAL		648.00
248	SUMMIT FOOD	ELIOR, INC	98996 AP	06/24/2022	2-001-5-07-261	C74100 INMATE MEALS 5/14-6/10		4,920.11	
248	SUMMIT FOOD	ELIOR, INC	98996 AP	06/24/2022	2-001-5-07-261	C74100 INMATE MEALS 5/14-6/10		4,959.00	
248	SUMMIT FOOD	ELIOR, INC	98996 AP	06/24/2022	2-001-5-07-261	C74100 INMATE MEALS 5/14-6/10		5,016.63	
248	SUMMIT FOOD	ELIOR, INC	98996 AP	06/24/2022	2-001-5-07-261	C74100 INMATE MEALS 5/14-6/10		5,016.59	
248	SUMMIT FOOD	ELIOR, INC	328533	98996 AP	06/24/2022	2-001-5-07-261	C74100 INMATE MEALS 5/14-6/10	4,920.11	
248	SUMMIT FOOD	ELIOR, INC	328533	98996 AP	06/24/2022	2-001-5-07-261	C74100 INMATE MEALS 5/14-6/10	4,959.00	
248	SUMMIT FOOD	ELIOR, INC	328533	98996 AP	06/24/2022	2-001-5-07-261	C74100 INMATE MEALS 5/14-6/10	5,016.63	
248	SUMMIT FOOD	ELIOR, INC	328533	98996 AP	06/24/2022	2-001-5-07-261	C74100 INMATE MEALS 5/14-6/10	5,016.59	
						*** VENDOR	248 TOTAL		39,824.66
42	TECH ELECTRONICS	TRONICOM, INC	98998 AP	06/24/2022	2-001-5-32-209	CS000037743 JC GROUND FAULT EX		365.00	
42	TECH ELECTRONICS	TRONICOM, INC	328535	98998 AP	06/24/2022	CS000037743 JC GROUND FAULT EX		365.00	
						*** VENDOR	42 TOTAL		730.00
22972	TRANSFER STATION	TRANSFER STATION	98999 AP	06/24/2022	2-001-5-32-297	ACCT 158 INV 5984 BDGS AND GRO		31.00	
22972	TRANSFER STATION	TRANSFER STATION	98999 AP	06/24/2022	2-001-5-32-297	ACCT 158 INV 5984 BDGS AND GRO		41.00	
22972	TRANSFER STATION	TRANSFER STATION	328536	98999 AP	06/24/2022	2-001-5-32-297	ACCT 158 INV 5984 BDGS AND GRO	31.00	
22972	TRANSFER STATION	TRANSFER STATION	328536	98999 AP	06/24/2022	2-001-5-32-297	ACCT 158 INV 5984 BDGS AND GRO	41.00	
						*** VENDOR	22972 TOTAL		144.00
41	UNDERGROUN	UNDERGROUND VAULTS & STORAGE	99000 AP	06/24/2022	2-001-5-19-214	100492 LEASE RENTA, SENT ITEMS		1,223.38	
41	UNDERGROUN	UNDERGROUND VAULTS & STORAGE	328537	99000 AP	06/24/2022	100492 LEASE RENTA, SENT ITEMS		1,223.38	
						*** VENDOR	41 TOTAL		2,446.76
2007	WIRENUTS	WIRENUTS	99002 AP	06/24/2022	2-001-5-07-207	REPL CAM IN E-POD,REL SWITCH C		427.24	
2007	WIRENUTS	WIRENUTS	99002 AP	06/24/2022	2-001-5-07-207	REPL CAM IN E-POD,REL SWITCH C		142.50	
2007	WIRENUTS	WIRENUTS	328539	99002 AP	06/24/2022	2-001-5-07-207	REPL CAM IN E-POD,REL SWITCH C	427.24	
2007	WIRENUTS	WIRENUTS	328539	99002 AP	06/24/2022	2-001-5-07-207	REPL CAM IN E-POD,REL SWITCH C	142.50	
						*** VENDOR	2007 TOTAL		1,139.48
100	WITNESS LIST								

warrants by vendor

TYPES OF CHECKS SELECTED: * ALL TYPES

		P.O.NUMBER	CHECK#							
100	WITNESS LIST							*** VENDOR	100 TOTAL	835.96
								TOTAL FUND 001		283,919.03
648	COMMERCE BANK-COMMER	COMMERCE BANK-COMMER	COMMERCE BANK-COMMERCIAL CARDS		98968 AP	06/24/2022	2-108-5-00-211	HEALTH:ELC2,MED SUPPLY,FP,WIC,		5.50
648	COMMERCE BANK-COMMER	COMMERCE BANK-COMMER	COMMERCE BANK-COMMERCIAL CARDS	328506	98969 AP	06/24/2022	2-108-5-00-211	HEALTH:ELC2,MED SUPPLY,FP,WIC,		5.50
648	COMMERCE BANK-COMMER	COMMERCE BANK-COMMER	COMMERCE BANK-COMMERCIAL CARDS		98968 AP	06/24/2022	2-108-5-00-213	HEALTH:ELC2,MED SUPPLY,FP,WIC,		30.00
648	COMMERCE BANK-COMMER	COMMERCE BANK-COMMER	COMMERCE BANK-COMMERCIAL CARDS	328506	98969 AP	06/24/2022	2-108-5-00-213	HEALTH:ELC2,MED SUPPLY,FP,WIC,		30.00
648	COMMERCE BANK-COMMER	COMMERCE BANK-COMMER	COMMERCE BANK-COMMERCIAL CARDS		98965 AP	06/24/2022	2-108-5-00-219	AT&T MOBILITY - HEALTH DEPT		164.69
648	COMMERCE BANK-COMMER	COMMERCE BANK-COMMER	COMMERCE BANK-COMMERCIAL CARDS		98968 AP	06/24/2022	2-108-5-00-219	HEALTH:ELC2,MED SUPPLY,FP,WIC,		255.93
648	COMMERCE BANK-COMMER	COMMERCE BANK-COMMER	COMMERCE BANK-COMMERCIAL CARDS	328506	98969 AP	06/24/2022	2-108-5-00-219	AT&T MOBILITY - HEALTH DEPT		164.69
648	COMMERCE BANK-COMMER	COMMERCE BANK-COMMER	COMMERCE BANK-COMMERCIAL CARDS	328506	98969 AP	06/24/2022	2-108-5-00-219	HEALTH:ELC2,MED SUPPLY,FP,WIC,		255.93
648	COMMERCE BANK-COMMER	COMMERCE BANK-COMMER	COMMERCE BANK-COMMERCIAL CARDS		98968 AP	06/24/2022	2-108-5-00-280	HEALTH:ELC2,MED SUPPLY,FP,WIC,		2,314.90
648	COMMERCE BANK-COMMER	COMMERCE BANK-COMMER	COMMERCE BANK-COMMERCIAL CARDS	328506	98969 AP	06/24/2022	2-108-5-00-280	HEALTH:ELC2,MED SUPPLY,FP,WIC,		2,314.90
648	COMMERCE BANK-COMMER	COMMERCE BANK-COMMER	COMMERCE BANK-COMMERCIAL CARDS		98968 AP	06/24/2022	2-108-5-00-301	HEALTH:ELC2,MED SUPPLY,FP,WIC,		83.76
648	COMMERCE BANK-COMMER	COMMERCE BANK-COMMER	COMMERCE BANK-COMMERCIAL CARDS	328506	98969 AP	06/24/2022	2-108-5-00-301	HEALTH:ELC2,MED SUPPLY,FP,WIC,		83.76
648	COMMERCE BANK-COMMER	COMMERCE BANK-COMMER	COMMERCE BANK-COMMERCIAL CARDS		98968 AP	06/24/2022	2-108-5-00-302	HEALTH:ELC2,MED SUPPLY,FP,WIC,		12.16
648	COMMERCE BANK-COMMER	COMMERCE BANK-COMMER	COMMERCE BANK-COMMERCIAL CARDS	328506	98969 AP	06/24/2022	2-108-5-00-302	HEALTH:ELC2,MED SUPPLY,FP,WIC,		12.16
648	COMMERCE BANK-COMMER	COMMERCE BANK-COMMER	COMMERCE BANK-COMMERCIAL CARDS		98968 AP	06/24/2022	2-108-5-00-380	HEALTH:ELC2,MED SUPPLY,FP,WIC,		1,998.88
648	COMMERCE BANK-COMMER	COMMERCE BANK-COMMER	COMMERCE BANK-COMMERCIAL CARDS	328506	98969 AP	06/24/2022	2-108-5-00-380	HEALTH:ELC2,MED SUPPLY,FP,WIC,		1,998.88
648	COMMERCE BANK-COMMER	COMMERCE BANK-COMMER	COMMERCE BANK-COMMERCIAL CARDS		98969 AP	06/24/2022	2-108-5-00-381	HEALTH:ELC2,MED SUPPLY,FP,WIC,		429.54
648	COMMERCE BANK-COMMER	COMMERCE BANK-COMMER	COMMERCE BANK-COMMERCIAL CARDS	328506	98969 AP	06/24/2022	2-108-5-00-381	HEALTH:ELC2,MED SUPPLY,FP,WIC,		429.54
648	COMMERCE BANK-COMMER	COMMERCE BANK-COMMER	COMMERCE BANK-COMMERCIAL CARDS		98969 AP	06/24/2022	2-108-5-00-384	HEALTH:ELC2,MED SUPPLY,FP,WIC,		1,781.72
648	COMMERCE BANK-COMMER	COMMERCE BANK-COMMER	COMMERCE BANK-COMMERCIAL CARDS	328506	98969 AP	06/24/2022	2-108-5-00-384	HEALTH:ELC2,MED SUPPLY,FP,WIC,		1,781.72
648	COMMERCE BANK-COMMER	COMMERCE BANK-COMMER	COMMERCE BANK-COMMERCIAL CARDS		98965 AP	06/24/2022	2-108-5-00-601	6-17 MIDWEST MOBILE RADIO		75.00
648	COMMERCE BANK-COMMER	COMMERCE BANK-COMMER	COMMERCE BANK-COMMERCIAL CARDS		98969 AP	06/24/2022	2-108-5-00-601	HEALTH:ELC2,MED SUPPLY,FP,WIC,		153.76
648	COMMERCE BANK-COMMER	COMMERCE BANK-COMMER	COMMERCE BANK-COMMERCIAL CARDS	328506	98969 AP	06/24/2022	2-108-5-00-601	6-17 MIDWEST MOBILE RADIO		75.00
648	COMMERCE BANK-COMMER	COMMERCE BANK-COMMER	COMMERCE BANK-COMMERCIAL CARDS	328506	98969 AP	06/24/2022	2-108-5-00-601	HEALTH:ELC2,MED SUPPLY,FP,WIC,		153.76
648	COMMERCE BANK-COMMER	COMMERCE BANK-COMMER	COMMERCE BANK-COMMERCIAL CARDS		98969 AP	06/24/2022	2-108-5-00-604	HEALTH:ELC2,MED SUPPLY,FP,WIC,		5,009.49
648	COMMERCE BANK-COMMER	COMMERCE BANK-COMMER	COMMERCE BANK-COMMERCIAL CARDS	328506	98969 AP	06/24/2022	2-108-5-00-604	HEALTH:ELC2,MED SUPPLY,FP,WIC,		5,009.49
648	COMMERCE BANK-COMMER	COMMERCE BANK-COMMER	COMMERCE BANK-COMMERCIAL CARDS		98968 AP	06/24/2022	2-108-5-00-606	JH: WIC GRANT		556.87
648	COMMERCE BANK-COMMER	COMMERCE BANK-COMMER	COMMERCE BANK-COMMERCIAL CARDS		98969 AP	06/24/2022	2-108-5-00-606	HEALTH:ELC2,MED SUPPLY,FP,WIC,		299.05
648	COMMERCE BANK-COMMER	COMMERCE BANK-COMMER	COMMERCE BANK-COMMERCIAL CARDS	328506	98969 AP	06/24/2022	2-108-5-00-606	JH: WIC GRANT		556.87
648	COMMERCE BANK-COMMER	COMMERCE BANK-COMMER	COMMERCE BANK-COMMERCIAL CARDS	328506	98969 AP	06/24/2022	2-108-5-00-606	HEALTH:ELC2,MED SUPPLY,FP,WIC,		299.05
648	COMMERCE BANK-COMMER	COMMERCE BANK-COMMER	COMMERCE BANK-COMMERCIAL CARDS		98969 AP	06/24/2022	2-108-5-00-610	HEALTH:ELC2,MED SUPPLY,FP,WIC,		910.04
648	COMMERCE BANK-COMMER	COMMERCE BANK-COMMER	COMMERCE BANK-COMMERCIAL CARDS	328506	98969 AP	06/24/2022	2-108-5-00-610	HEALTH:ELC2,MED SUPPLY,FP,WIC,		910.04
								*** VENDOR	648 TOTAL	28,162.58
86	EVERGY	EVERGY KANSAS CENTRAL INC		328466	98948 AP	06/22/2022	2-108-5-00-219	ELEC SVC HEALTH/WIC		506.90
86	EVERGY	EVERGY KANSAS CENTRAL INC		328466	98948 AP	06/22/2022	2-108-5-00-606	ELEC SVC HEALTH/WIC		168.96
								*** VENDOR	86 TOTAL	675.86
23163	HEMOCUE AMERICA	RADIOMETER AMERICA INC DIV:HEM			98978 AP	06/24/2022	2-108-5-00-380	29235 CUVETTES, SHIPPING		99.00

warrants by vendor

START DATE: 06/18/2022 END DATE: 06/24/2022

TYPES OF CHECKS SELECTED: * ALL TYPES

		P.O.NUMBER	CHECK#						
23163	HEMOCUE AMERICA	RADIOMETER AMERICA INC DIV:HEM	328515	98978 AP	06/24/2022	2-108-5-00-380	29235 CUVETTES, SHIPPING	99.00	
23163	HEMOCUE AMERICA	RADIOMETER AMERICA INC DIV:HEM		98978 AP	06/24/2022	2-108-5-00-606	29235 CUVETTES, SHIPPING	99.00	
23163	HEMOCUE AMERICA	RADIOMETER AMERICA INC DIV:HEM	328515	98978 AP	06/24/2022	2-108-5-00-606	29235 CUVETTES, SHIPPING	99.00	
*** VENDOR								23163 TOTAL	396.00
1629	KU PHYSICIANS	KANSAS UNIVERSITY PHYSICIANS I		98984 AP	06/24/2022	2-108-5-00-280	PRENATAL CLINICAL SERVICES - J	1,800.00	
1629	KU PHYSICIANS	KANSAS UNIVERSITY PHYSICIANS I		98984 AP	06/24/2022	2-108-5-00-280	PRENATAL CLINICAL SERVICES - J	1,800.00	
1629	KU PHYSICIANS	KANSAS UNIVERSITY PHYSICIANS I	328521	98984 AP	06/24/2022	2-108-5-00-280	PRENATAL CLINICAL SERVICES - J	1,800.00	
1629	KU PHYSICIANS	KANSAS UNIVERSITY PHYSICIANS I	328521	98984 AP	06/24/2022	2-108-5-00-280	PRENATAL CLINICAL SERVICES - J	1,800.00	
*** VENDOR								1629 TOTAL	7,200.00
TOTAL FUND 108									36,434.44

24545	CDW GOVERN	CDW GOVERNMENT INC		98964 AP	06/24/2022	2-115-5-00-408	11106763 CISCO PHONES	5,352.00	
24545	CDW GOVERN	CDW GOVERNMENT INC	328505	98964 AP	06/24/2022	2-115-5-00-408	11106763 CISCO PHONES	5,352.00	
*** VENDOR								24545 TOTAL	10,704.00
TOTAL FUND 115									10,704.00

24553	ATCHISON	ATCHISON CO COMMUNITY CORRECTI		98958 AP	06/24/2022	2-121-5-00-2	4TH QTR STATE REIMB	6,462.35	
24553	ATCHISON	ATCHISON CO COMMUNITY CORRECTI	328499	98958 AP	06/24/2022	2-121-5-00-2	4TH QTR STATE REIMB	6,462.35	
*** VENDOR								24553 TOTAL	12,924.70
1831	USD 469 AFTER SCHOOL	USD 469 AFTER SCHOOL VILLAGE		99001 AP	06/24/2022	2-121-5-00-208	3RD QUARTER REIMB (STATE FUNDS	3,750.00	
1831	USD 469 AFTER SCHOOL	USD 469 AFTER SCHOOL VILLAGE		99001 AP	06/24/2022	2-121-5-00-208	STATE REIMB 4TH QTR	3,000.00	
1831	USD 469 AFTER SCHOOL	USD 469 AFTER SCHOOL VILLAGE	328538	99001 AP	06/24/2022	2-121-5-00-208	3RD QUARTER REIMB (STATE FUNDS	3,750.00	
1831	USD 469 AFTER SCHOOL	USD 469 AFTER SCHOOL VILLAGE	328538	99001 AP	06/24/2022	2-121-5-00-208	STATE REIMB 4TH QTR	3,000.00	
*** VENDOR								1831 TOTAL	13,500.00
TOTAL FUND 121									26,424.70

648	COMMERCE BANK-COMMER	COMMERCE BANK-COMMERCIAL CARDS		98967 AP	06/24/2022	2-123-5-00-301	COMM CORR FOOD FOR OPEN HOUSE	86.24	
648	COMMERCE BANK-COMMER	COMMERCE BANK-COMMERCIAL CARDS	328506	98969 AP	06/24/2022	2-123-5-00-301	COMM CORR FOOD FOR OPEN HOUSE	86.24	
*** VENDOR								648 TOTAL	172.48
596	IOWA STATE	IOWA STATE UNIVERSITY OF SCIEN		98981 AP	06/24/2022	2-123-5-00-301	00338867 TRAINING-JAMIE VANHOU	2,720.00	
596	IOWA STATE	IOWA STATE UNIVERSITY OF SCIEN	328518	98981 AP	06/24/2022	2-123-5-00-301	00338867 TRAINING-JAMIE VANHOU	2,720.00	
*** VENDOR								596 TOTAL	5,440.00
TOTAL FUND 123									5,612.48

648	COMMERCE BANK-COMMER	COMMERCE BANK-COMMERCIAL CARDS		98967 AP	06/24/2022	2-126-5-00-210	COMM CORR:VERIZON,OFC SUPPLY	40.01	
648	COMMERCE BANK-COMMER	COMMERCE BANK-COMMERCIAL CARDS	328506	98969 AP	06/24/2022	2-126-5-00-210	COMM CORR:VERIZON,OFC SUPPLY	40.01	
648	COMMERCE BANK-COMMER	COMMERCE BANK-COMMERCIAL CARDS		98965 AP	06/24/2022	2-126-5-00-221	FLEETHOSTER JUNE SERVICE	19.95	
648	COMMERCE BANK-COMMER	COMMERCE BANK-COMMERCIAL CARDS	328506	98969 AP	06/24/2022	2-126-5-00-221	FLEETHOSTER JUNE SERVICE	19.95	
648	COMMERCE BANK-COMMER	COMMERCE BANK-COMMERCIAL CARDS		98967 AP	06/24/2022	2-126-5-00-321	COMM CORR:VERIZON,OFC SUPPLY	3.79	
648	COMMERCE BANK-COMMER	COMMERCE BANK-COMMERCIAL CARDS	328506	98969 AP	06/24/2022	2-126-5-00-321	COMM CORR:VERIZON,OFC SUPPLY	3.79	
*** VENDOR								648 TOTAL	127.50
4755	LEAV PAPER	LEAVENWORTH PAPER AND OFFICE S		98985 AP	06/24/2022	2-126-5-00-321	COMM CORRECTIONS:INDEX DIVIDER	18.27	
4755	LEAV PAPER	LEAVENWORTH PAPER AND OFFICE S	328522	98985 AP	06/24/2022	2-126-5-00-321	COMM CORRECTIONS:INDEX DIVIDER	18.27	
*** VENDOR								4755 TOTAL	36.54
221	MIRROR	THE MIRROR INC		98989 AP	06/24/2022	2-126-5-00-705	SUBSTANCE ABUSE ASSESSMENT TS	175.00	
221	MIRROR	THE MIRROR INC	328526	98989 AP	06/24/2022	2-126-5-00-705	SUBSTANCE ABUSE ASSESSMENT TS	175.00	
*** VENDOR								221 TOTAL	350.00
207	SUNFLOWER HEALING	KATHRYN KAY LUNA		98997 AP	06/24/2022	2-126-5-00-705	BIP SESSIONS-EB	50.00	
207	SUNFLOWER HEALING	KATHRYN KAY LUNA	328534	98997 AP	06/24/2022	2-126-5-00-705	BIP SESSIONS-EB	50.00	
*** VENDOR								207 TOTAL	100.00
TOTAL FUND 126									614.04

START DATE: 06/18/2022 END DATE: 06/24/2022

TYPES OF CHECKS SELECTED: * ALL TYPES

			P.O.NUMBER	CHECK#						
648	COMMERCE BANK-COMMER	COMMERCE BANK-COMMERCIAL CARDS		98967 AP	06/24/2022	2-127-5-00-3	COMMCORR:TNG,BACKGROUND CKS	455.00		
648	COMMERCE BANK-COMMER	COMMERCE BANK-COMMERCIAL CARDS		98967 AP	06/24/2022	2-127-5-00-3	COMMCORR:TNG,BACKGROUND CKS	10.25		
648	COMMERCE BANK-COMMER	COMMERCE BANK-COMMERCIAL CARDS	328506	98969 AP	06/24/2022	2-127-5-00-3	COMMCORR:TNG,BACKGROUND CKS	455.00		
648	COMMERCE BANK-COMMER	COMMERCE BANK-COMMERCIAL CARDS	328506	98969 AP	06/24/2022	2-127-5-00-3	COMMCORR:TNG,BACKGROUND CKS	10.25		
								*** VENDOR	648 TOTAL	930.50
								TOTAL FUND 127		930.50

4120	ACE IMAGEWEAR	AAA LAUNDRY & LINEN SUPPLY CO		98953 AP	06/24/2022	2-133-5-00-215	6-35 4013-01993 UNIFORM RENTAL	286.09		
4120	ACE IMAGEWEAR	AAA LAUNDRY & LINEN SUPPLY CO		98953 AP	06/24/2022	2-133-5-00-215	6-35 4013-01993 UNIFORM RENTAL	270.40		
4120	ACE IMAGEWEAR	AAA LAUNDRY & LINEN SUPPLY CO		98953 AP	06/24/2022	2-133-5-00-215	6-35 4013-01993 UNIFORM RENTAL	296.40		
4120	ACE IMAGEWEAR	AAA LAUNDRY & LINEN SUPPLY CO	328494	98953 AP	06/24/2022	2-133-5-00-215	6-35 4013-01993 UNIFORM RENTAL	286.09		
4120	ACE IMAGEWEAR	AAA LAUNDRY & LINEN SUPPLY CO	328494	98953 AP	06/24/2022	2-133-5-00-215	6-35 4013-01993 UNIFORM RENTAL	270.40		
4120	ACE IMAGEWEAR	AAA LAUNDRY & LINEN SUPPLY CO	328494	98953 AP	06/24/2022	2-133-5-00-215	6-35 4013-01993 UNIFORM RENTAL	296.40		
4120	ACE IMAGEWEAR	AAA LAUNDRY & LINEN SUPPLY CO		98953 AP	06/24/2022	2-133-5-00-312	6-35 4013-01993 UNIFORM RENTAL	224.00		
4120	ACE IMAGEWEAR	AAA LAUNDRY & LINEN SUPPLY CO		98953 AP	06/24/2022	2-133-5-00-312	6-35 4013-01993 UNIFORM RENTAL	216.63		
4120	ACE IMAGEWEAR	AAA LAUNDRY & LINEN SUPPLY CO		98953 AP	06/24/2022	2-133-5-00-312	6-35 4013-01993 UNIFORM RENTAL	217.53		
4120	ACE IMAGEWEAR	AAA LAUNDRY & LINEN SUPPLY CO	328494	98953 AP	06/24/2022	2-133-5-00-312	6-35 4013-01993 UNIFORM RENTAL	224.00		
4120	ACE IMAGEWEAR	AAA LAUNDRY & LINEN SUPPLY CO	328494	98953 AP	06/24/2022	2-133-5-00-312	6-35 4013-01993 UNIFORM RENTAL	216.63		
4120	ACE IMAGEWEAR	AAA LAUNDRY & LINEN SUPPLY CO	328494	98953 AP	06/24/2022	2-133-5-00-312	6-35 4013-01993 UNIFORM RENTAL	217.53		
								*** VENDOR	4120 TOTAL	3,022.10
648	COMMERCE BANK-COMMER	COMMERCE BANK-COMMERCIAL CARDS		98968 AP	06/24/2022	2-133-5-00-201	6-33 SAFETY/SHOP/WELDING/OFC S	10.90		
648	COMMERCE BANK-COMMER	COMMERCE BANK-COMMERCIAL CARDS		98969 AP	06/24/2022	2-133-5-00-201	6-34 TIRES,PARTS,SHOP/WELCING/	16.30		
648	COMMERCE BANK-COMMER	COMMERCE BANK-COMMERCIAL CARDS	328506	98969 AP	06/24/2022	2-133-5-00-201	6-33 SAFETY/SHOP/WELDING/OFC S	10.90		
648	COMMERCE BANK-COMMER	COMMERCE BANK-COMMERCIAL CARDS	328506	98969 AP	06/24/2022	2-133-5-00-201	6-34 TIRES,PARTS,SHOP/WELCING/	16.30		
648	COMMERCE BANK-COMMER	COMMERCE BANK-COMMERCIAL CARDS		98965 AP	06/24/2022	2-133-5-00-207	6-17 MIDWEST MOBILE RADIO	395.00		
648	COMMERCE BANK-COMMER	COMMERCE BANK-COMMERCIAL CARDS	328506	98969 AP	06/24/2022	2-133-5-00-207	6-17 MIDWEST MOBILE RADIO	395.00		
648	COMMERCE BANK-COMMER	COMMERCE BANK-COMMERCIAL CARDS		98965 AP	06/24/2022	2-133-5-00-210	6-3 AT&T MOBLITY - PW/COLE	287.83		
648	COMMERCE BANK-COMMER	COMMERCE BANK-COMMERCIAL CARDS		98965 AP	06/24/2022	2-133-5-00-210	6-3 AT&T MOBLITY - PW/COLE	105.38		
648	COMMERCE BANK-COMMER	COMMERCE BANK-COMMERCIAL CARDS	328506	98969 AP	06/24/2022	2-133-5-00-210	6-3 AT&T MOBLITY - PW/COLE	287.83		
648	COMMERCE BANK-COMMER	COMMERCE BANK-COMMERCIAL CARDS	328506	98969 AP	06/24/2022	2-133-5-00-210	6-3 AT&T MOBLITY - PW/COLE	105.38		
648	COMMERCE BANK-COMMER	COMMERCE BANK-COMMERCIAL CARDS		98969 AP	06/24/2022	2-133-5-00-227	6-34 TIRES,PARTS,SHOP/WELCING/	1,072.50		
648	COMMERCE BANK-COMMER	COMMERCE BANK-COMMERCIAL CARDS	328506	98969 AP	06/24/2022	2-133-5-00-227	6-34 TIRES,PARTS,SHOP/WELCING/	1,072.50		
648	COMMERCE BANK-COMMER	COMMERCE BANK-COMMERCIAL CARDS		98965 AP	06/24/2022	2-133-5-00-229	FLEETHOSTER JUNE SERVICE	1,089.49		
648	COMMERCE BANK-COMMER	COMMERCE BANK-COMMERCIAL CARDS	328506	98969 AP	06/24/2022	2-133-5-00-229	FLEETHOSTER JUNE SERVICE	1,089.49		
648	COMMERCE BANK-COMMER	COMMERCE BANK-COMMERCIAL CARDS		98968 AP	06/24/2022	2-133-5-00-301	6-33 SAFETY/SHOP/WELDING/OFC S	293.95		
648	COMMERCE BANK-COMMER	COMMERCE BANK-COMMERCIAL CARDS		98968 AP	06/24/2022	2-133-5-00-301	6-33 SAFETY/SHOP/WELDING/OFC S	74.44		
648	COMMERCE BANK-COMMER	COMMERCE BANK-COMMERCIAL CARDS		98968 AP	06/24/2022	2-133-5-00-301	6-33 SAFETY/SHOP/WELDING/OFC S	269.98		
648	COMMERCE BANK-COMMER	COMMERCE BANK-COMMERCIAL CARDS	328506	98969 AP	06/24/2022	2-133-5-00-301	6-33 SAFETY/SHOP/WELDING/OFC S	293.95		
648	COMMERCE BANK-COMMER	COMMERCE BANK-COMMERCIAL CARDS	328506	98969 AP	06/24/2022	2-133-5-00-301	6-33 SAFETY/SHOP/WELDING/OFC S	74.44		
648	COMMERCE BANK-COMMER	COMMERCE BANK-COMMERCIAL CARDS	328506	98969 AP	06/24/2022	2-133-5-00-301	6-33 SAFETY/SHOP/WELDING/OFC S	269.98		
648	COMMERCE BANK-COMMER	COMMERCE BANK-COMMERCIAL CARDS		98968 AP	06/24/2022	2-133-5-00-309	6-33 SAFETY/SHOP/WELDING/OFC S	913.44		
648	COMMERCE BANK-COMMER	COMMERCE BANK-COMMERCIAL CARDS		98969 AP	06/24/2022	2-133-5-00-309	6-34 TIRES,PARTS,SHOP/WELCING/	2,035.54		
648	COMMERCE BANK-COMMER	COMMERCE BANK-COMMERCIAL CARDS	328506	98969 AP	06/24/2022	2-133-5-00-309	6-33 SAFETY/SHOP/WELDING/OFC S	913.44		
648	COMMERCE BANK-COMMER	COMMERCE BANK-COMMERCIAL CARDS	328506	98969 AP	06/24/2022	2-133-5-00-309	6-34 TIRES,PARTS,SHOP/WELCING/	2,035.54		
648	COMMERCE BANK-COMMER	COMMERCE BANK-COMMERCIAL CARDS		98968 AP	06/24/2022	2-133-5-00-311	6-33 SAFETY/SHOP/WELDING/OFC S	113.51		
648	COMMERCE BANK-COMMER	COMMERCE BANK-COMMERCIAL CARDS		98969 AP	06/24/2022	2-133-5-00-311	6-34 TIRES,PARTS,SHOP/WELCING/	667.94		
648	COMMERCE BANK-COMMER	COMMERCE BANK-COMMERCIAL CARDS	328506	98969 AP	06/24/2022	2-133-5-00-311	6-33 SAFETY/SHOP/WELDING/OFC S	113.51		
648	COMMERCE BANK-COMMER	COMMERCE BANK-COMMERCIAL CARDS	328506	98969 AP	06/24/2022	2-133-5-00-311	6-34 TIRES,PARTS,SHOP/WELCING/	667.94		
648	COMMERCE BANK-COMMER	COMMERCE BANK-COMMERCIAL CARDS		98968 AP	06/24/2022	2-133-5-00-312	6-33 SAFETY/SHOP/WELDING/OFC S	26.88		
648	COMMERCE BANK-COMMER	COMMERCE BANK-COMMERCIAL CARDS		98968 AP	06/24/2022	2-133-5-00-312	6-33 SAFETY/SHOP/WELDING/OFC S	182.00		
648	COMMERCE BANK-COMMER	COMMERCE BANK-COMMERCIAL CARDS		98969 AP	06/24/2022	2-133-5-00-312	6-34 TIRES,PARTS,SHOP/WELCING/	954.93		
648	COMMERCE BANK-COMMER	COMMERCE BANK-COMMERCIAL CARDS	328506	98969 AP	06/24/2022	2-133-5-00-312	6-33 SAFETY/SHOP/WELDING/OFC S	26.88		

START DATE: 06/18/2022 END DATE: 06/24/2022

TYPES OF CHECKS SELECTED: * ALL TYPES

			P.O.NUMBER	CHECK#						
648	COMMERCE BANK-COMMER	COMMERCE BANK-COMMERCIAL CARDS	328506	98969 AP	06/24/2022	2-133-5-00-312	6-33 SAFETY/SHOP/WELDING/OFC S		182.00	
648	COMMERCE BANK-COMMER	COMMERCE BANK-COMMERCIAL CARDS	328506	98969 AP	06/24/2022	2-133-5-00-312	6-34 TIRES, PARTS, SHOP/WELCING/		954.93	
648	COMMERCE BANK-COMMER	COMMERCE BANK-COMMERCIAL CARDS		98969 AP	06/24/2022	2-133-5-00-327	6-34 TIRES, PARTS, SHOP/WELCING/		9.98	
648	COMMERCE BANK-COMMER	COMMERCE BANK-COMMERCIAL CARDS	328506	98969 AP	06/24/2022	2-133-5-00-327	6-34 TIRES, PARTS, SHOP/WELCING/		9.98	
648	COMMERCE BANK-COMMER	COMMERCE BANK-COMMERCIAL CARDS		98968 AP	06/24/2022	2-133-5-00-360	6-33 SAFETY/SHOP/WELDING/OFC S		25.99	
648	COMMERCE BANK-COMMER	COMMERCE BANK-COMMERCIAL CARDS		98968 AP	06/24/2022	2-133-5-00-360	6-33 SAFETY/SHOP/WELDING/OFC S		18.97	
648	COMMERCE BANK-COMMER	COMMERCE BANK-COMMERCIAL CARDS		98969 AP	06/24/2022	2-133-5-00-360	6-34 TIRES, PARTS, SHOP/WELCING/		1,462.41	
648	COMMERCE BANK-COMMER	COMMERCE BANK-COMMERCIAL CARDS	328506	98969 AP	06/24/2022	2-133-5-00-360	6-33 SAFETY/SHOP/WELDING/OFC S		25.99	
648	COMMERCE BANK-COMMER	COMMERCE BANK-COMMERCIAL CARDS	328506	98969 AP	06/24/2022	2-133-5-00-360	6-33 SAFETY/SHOP/WELDING/OFC S		18.97	
648	COMMERCE BANK-COMMER	COMMERCE BANK-COMMERCIAL CARDS	328506	98969 AP	06/24/2022	2-133-5-00-360	6-34 TIRES, PARTS, SHOP/WELCING/		1,462.41	
648	COMMERCE BANK-COMMER	COMMERCE BANK-COMMERCIAL CARDS		98968 AP	06/24/2022	2-133-5-00-364	6-33 SAFETY/SHOP/WELDING/OFC S		570.79	
648	COMMERCE BANK-COMMER	COMMERCE BANK-COMMERCIAL CARDS		98968 AP	06/24/2022	2-133-5-00-364	6-33 SAFETY/SHOP/WELDING/OFC S		686.88	
648	COMMERCE BANK-COMMER	COMMERCE BANK-COMMERCIAL CARDS	328506	98969 AP	06/24/2022	2-133-5-00-364	6-33 SAFETY/SHOP/WELDING/OFC S		570.79	
648	COMMERCE BANK-COMMER	COMMERCE BANK-COMMERCIAL CARDS	328506	98969 AP	06/24/2022	2-133-5-00-364	6-33 SAFETY/SHOP/WELDING/OFC S		686.88	
648	COMMERCE BANK-COMMER	COMMERCE BANK-COMMERCIAL CARDS		98969 AP	06/24/2022	2-133-5-00-365	6-34 TIRES, PARTS, SHOP/WELCING/		50.25	
648	COMMERCE BANK-COMMER	COMMERCE BANK-COMMERCIAL CARDS		98969 AP	06/24/2022	2-133-5-00-365	6-34 TIRES, PARTS, SHOP/WELCING/		211.97	
648	COMMERCE BANK-COMMER	COMMERCE BANK-COMMERCIAL CARDS		98969 AP	06/24/2022	2-133-5-00-365	6-34 TIRES, PARTS, SHOP/WELCING/		653.91	
648	COMMERCE BANK-COMMER	COMMERCE BANK-COMMERCIAL CARDS	328506	98969 AP	06/24/2022	2-133-5-00-365	6-34 TIRES, PARTS, SHOP/WELCING/		50.25	
648	COMMERCE BANK-COMMER	COMMERCE BANK-COMMERCIAL CARDS	328506	98969 AP	06/24/2022	2-133-5-00-365	6-34 TIRES, PARTS, SHOP/WELCING/		211.97	
648	COMMERCE BANK-COMMER	COMMERCE BANK-COMMERCIAL CARDS	328506	98969 AP	06/24/2022	2-133-5-00-365	6-34 TIRES, PARTS, SHOP/WELCING/		653.91	
							*** VENDOR	648 TOTAL		24,402.32
86	EVERGY	EVERGY KANSAS CENTRAL INC		98971 AP	06/24/2022	2-133-5-00-251	6-53 ELECT SVC CO SHOP ET AL		751.26	
86	EVERGY	EVERGY KANSAS CENTRAL INC		98971 AP	06/24/2022	2-133-5-00-251	6-53 ELECT SVC CO SHOP ET AL		164.38	
86	EVERGY	EVERGY KANSAS CENTRAL INC		98971 AP	06/24/2022	2-133-5-00-251	6-53 ELECT SVC CO SHOP ET AL		41.66	
86	EVERGY	EVERGY KANSAS CENTRAL INC		98971 AP	06/24/2022	2-133-5-00-251	6-53 ELECT SVC CO SHOP ET AL		58.31	
86	EVERGY	EVERGY KANSAS CENTRAL INC	328508	98971 AP	06/24/2022	2-133-5-00-251	6-53 ELECT SVC CO SHOP ET AL		751.26	
86	EVERGY	EVERGY KANSAS CENTRAL INC	328508	98971 AP	06/24/2022	2-133-5-00-251	6-53 ELECT SVC CO SHOP ET AL		164.38	
86	EVERGY	EVERGY KANSAS CENTRAL INC	328508	98971 AP	06/24/2022	2-133-5-00-251	6-53 ELECT SVC CO SHOP ET AL		41.66	
86	EVERGY	EVERGY KANSAS CENTRAL INC	328508	98971 AP	06/24/2022	2-133-5-00-251	6-53 ELECT SVC CO SHOP ET AL		58.31	
							*** VENDOR	86 TOTAL		2,031.22
434	HAMM QUARR	HAMM QUARRIES		98977 AP	06/24/2022	2-133-5-00-361	6-41 300467 ROCK		1,837.10	
434	HAMM QUARR	HAMM QUARRIES		98977 AP	06/24/2022	2-133-5-00-361	6-41 300467 ROCK		3,026.92	
434	HAMM QUARR	HAMM QUARRIES		98977 AP	06/24/2022	2-133-5-00-361	6-41 300467 ROCK		1,073.11	
434	HAMM QUARR	HAMM QUARRIES		98977 AP	06/24/2022	2-133-5-00-361	6-41 300467 ROCK		1,115.56	
434	HAMM QUARR	HAMM QUARRIES		98977 AP	06/24/2022	2-133-5-00-361	6-41 300467 ROCK		361.10	
434	HAMM QUARR	HAMM QUARRIES	328514	98977 AP	06/24/2022	2-133-5-00-361	6-41 300467 ROCK		1,837.10	
434	HAMM QUARR	HAMM QUARRIES	328514	98977 AP	06/24/2022	2-133-5-00-361	6-41 300467 ROCK		3,026.92	
434	HAMM QUARR	HAMM QUARRIES	328514	98977 AP	06/24/2022	2-133-5-00-361	6-41 300467 ROCK		1,073.11	
434	HAMM QUARR	HAMM QUARRIES	328514	98977 AP	06/24/2022	2-133-5-00-361	6-41 300467 ROCK		1,115.56	
434	HAMM QUARR	HAMM QUARRIES	328514	98977 AP	06/24/2022	2-133-5-00-361	6-41 300467 ROCK		361.10	
							*** VENDOR	434 TOTAL		14,827.58
							TOTAL FUND 133			44,283.22
648	COMMERCE BANK-COMMER	COMMERCE BANK-COMMERCIAL CARDS		98969 AP	06/24/2022	2-136-5-00-207	COMM CORR: GED EXAM		39.00	
648	COMMERCE BANK-COMMER	COMMERCE BANK-COMMERCIAL CARDS	328506	98969 AP	06/24/2022	2-136-5-00-207	COMM CORR: GED EXAM		39.00	
648	COMMERCE BANK-COMMER	COMMERCE BANK-COMMERCIAL CARDS		98965 AP	06/24/2022	2-136-5-00-221	FLEETHOSTER JUNE SERVICE		19.95	
648	COMMERCE BANK-COMMER	COMMERCE BANK-COMMERCIAL CARDS	328506	98969 AP	06/24/2022	2-136-5-00-221	FLEETHOSTER JUNE SERVICE		19.95	
648	COMMERCE BANK-COMMER	COMMERCE BANK-COMMERCIAL CARDS		98967 AP	06/24/2022	2-136-5-00-226	COMM CORR:VERIZON,OFC SUPPLY		40.01	
648	COMMERCE BANK-COMMER	COMMERCE BANK-COMMERCIAL CARDS	328506	98969 AP	06/24/2022	2-136-5-00-226	COMM CORR:VERIZON,OFC SUPPLY		40.01	
							*** VENDOR	648 TOTAL		197.92
596	IOWA STATE	IOWA STATE UNIVERSITY OF SCIEN		98981 AP	06/24/2022	2-136-5-00-234	00338867 TRAINING-JAMIE VANHOU		1,480.00	
596	IOWA STATE	IOWA STATE UNIVERSITY OF SCIEN	328518	98981 AP	06/24/2022	2-136-5-00-234	00338867 TRAINING-JAMIE VANHOU		1,480.00	

TYPES OF CHECKS SELECTED: * ALL TYPES

		P.O.NUMBER	CHECK#					*** VENDOR	596 TOTAL	2,960.00	
								TOTAL FUND 136		3,157.92	
4120	ACE IMAGEWEAR	AAA LAUNDRY & LINEN SUPPLY CO	98953 AP	06/24/2022	2-137-5-00-203	6-11	4013-01993 UNIFORM RENTAL		105.52		
4120	ACE IMAGEWEAR	AAA LAUNDRY & LINEN SUPPLY CO	98953 AP	06/24/2022	2-137-5-00-203	6-11	4013-01993 UNIFORM RENTAL		105.52		
4120	ACE IMAGEWEAR	AAA LAUNDRY & LINEN SUPPLY CO	98953 AP	06/24/2022	2-137-5-00-203	6-11	4013-01993 UNIFORM RENTAL		105.52		
4120	ACE IMAGEWEAR	AAA LAUNDRY & LINEN SUPPLY CO	328494	98953 AP	06/24/2022	2-137-5-00-203	6-11	4013-01993 UNIFORM RENTAL	105.52		
4120	ACE IMAGEWEAR	AAA LAUNDRY & LINEN SUPPLY CO	328494	98953 AP	06/24/2022	2-137-5-00-203	6-11	4013-01993 UNIFORM RENTAL	105.52		
4120	ACE IMAGEWEAR	AAA LAUNDRY & LINEN SUPPLY CO	328494	98953 AP	06/24/2022	2-137-5-00-203	6-11	4013-01993 UNIFORM RENTAL	105.52		
									*** VENDOR	4120 TOTAL	633.12
648	COMMERCE BANK-COMMER	COMMERCE BANK-COMMERCIAL CARDS	98969 AP	06/24/2022	2-137-5-00-320	6-10	AREVALO:FILTERS,MANUALS		508.12		
648	COMMERCE BANK-COMMER	COMMERCE BANK-COMMERCIAL CARDS	328506	98969 AP	06/24/2022	2-137-5-00-320	6-10	AREVALO:FILTERS,MANUALS	508.12		
									*** VENDOR	648 TOTAL	1,016.24
434	HAMM QUARR	HAMM QUARRIES	98977 AP	06/24/2022	2-137-5-00-312	6-14	300467 ROCK		2,935.29		
434	HAMM QUARR	HAMM QUARRIES	98977 AP	06/24/2022	2-137-5-00-312	6-14	300467 ROCK		7,367.54		
434	HAMM QUARR	HAMM QUARRIES	98977 AP	06/24/2022	2-137-5-00-312	6-14	300467 ROCK		1,964.73		
434	HAMM QUARR	HAMM QUARRIES	98977 AP	06/24/2022	2-137-5-00-312	6-13	300467 ROCK		4,606.32		
434	HAMM QUARR	HAMM QUARRIES	98977 AP	06/24/2022	2-137-5-00-312	6-13	300467 ROCK		6,035.37		
434	HAMM QUARR	HAMM QUARRIES	98977 AP	06/24/2022	2-137-5-00-312	6-13	300467 ROCK		1,985.76		
434	HAMM QUARR	HAMM QUARRIES	98977 AP	06/24/2022	2-137-5-00-312	6-13	300467 ROCK		4,466.23		
434	HAMM QUARR	HAMM QUARRIES	98977 AP	06/24/2022	2-137-5-00-312	6-13	300467 ROCK		611.05		
434	HAMM QUARR	HAMM QUARRIES	98977 AP	06/24/2022	2-137-5-00-312	6-13	300467 ROCK		1,206.94		
434	HAMM QUARR	HAMM QUARRIES	98977 AP	06/24/2022	2-137-5-00-312	6-13	300467 ROCK		3,721.77		
434	HAMM QUARR	HAMM QUARRIES	98977 AP	06/24/2022	2-137-5-00-312	6-13	300467 ROCK		245.46		
434	HAMM QUARR	HAMM QUARRIES	98977 AP	06/24/2022	2-137-5-00-312	6-13	300467 ROCK		1,163.15		
434	HAMM QUARR	HAMM QUARRIES	98977 AP	06/24/2022	2-137-5-00-312	6-13	300467 ROCK		580.99		
434	HAMM QUARR	HAMM QUARRIES	328514	98977 AP	06/24/2022	2-137-5-00-312	6-14	300467 ROCK	2,935.29		
434	HAMM QUARR	HAMM QUARRIES	328514	98977 AP	06/24/2022	2-137-5-00-312	6-14	300467 ROCK	7,367.54		
434	HAMM QUARR	HAMM QUARRIES	328514	98977 AP	06/24/2022	2-137-5-00-312	6-14	300467 ROCK	1,964.73		
434	HAMM QUARR	HAMM QUARRIES	328514	98977 AP	06/24/2022	2-137-5-00-312	6-13	300467 ROCK	4,606.32		
434	HAMM QUARR	HAMM QUARRIES	328514	98977 AP	06/24/2022	2-137-5-00-312	6-13	300467 ROCK	6,035.37		
434	HAMM QUARR	HAMM QUARRIES	328514	98977 AP	06/24/2022	2-137-5-00-312	6-13	300467 ROCK	1,985.76		
434	HAMM QUARR	HAMM QUARRIES	328514	98977 AP	06/24/2022	2-137-5-00-312	6-13	300467 ROCK	4,466.23		
434	HAMM QUARR	HAMM QUARRIES	328514	98977 AP	06/24/2022	2-137-5-00-312	6-13	300467 ROCK	611.05		
434	HAMM QUARR	HAMM QUARRIES	328514	98977 AP	06/24/2022	2-137-5-00-312	6-13	300467 ROCK	1,206.94		
434	HAMM QUARR	HAMM QUARRIES	328514	98977 AP	06/24/2022	2-137-5-00-312	6-13	300467 ROCK	3,721.77		
434	HAMM QUARR	HAMM QUARRIES	328514	98977 AP	06/24/2022	2-137-5-00-312	6-13	300467 ROCK	245.46		
434	HAMM QUARR	HAMM QUARRIES	328514	98977 AP	06/24/2022	2-137-5-00-312	6-13	300467 ROCK	1,163.15		
434	HAMM QUARR	HAMM QUARRIES	328514	98977 AP	06/24/2022	2-137-5-00-312	6-13	300467 ROCK	580.99		
									*** VENDOR	434 TOTAL	73,781.20
369	HOLLIDAY	HOLLIDAY SAND & GRAVEL CO	98979 AP	06/24/2022	2-137-5-00-312	6-16	218331		570.52		
369	HOLLIDAY	HOLLIDAY SAND & GRAVEL CO	98979 AP	06/24/2022	2-137-5-00-312	6-16	218331		221.65		
369	HOLLIDAY	HOLLIDAY SAND & GRAVEL CO	98979 AP	06/24/2022	2-137-5-00-312	6-16	218331		421.97		
369	HOLLIDAY	HOLLIDAY SAND & GRAVEL CO	98979 AP	06/24/2022	2-137-5-00-312	6-16	218331		878.03		
369	HOLLIDAY	HOLLIDAY SAND & GRAVEL CO	98979 AP	06/24/2022	2-137-5-00-312	6-15	218331 ROCK		446.47		
369	HOLLIDAY	HOLLIDAY SAND & GRAVEL CO	98979 AP	06/24/2022	2-137-5-00-312	6-15	218331 ROCK		1,053.08		
369	HOLLIDAY	HOLLIDAY SAND & GRAVEL CO	98979 AP	06/24/2022	2-137-5-00-312	6-15	218331 ROCK		862.49		
369	HOLLIDAY	HOLLIDAY SAND & GRAVEL CO	98979 AP	06/24/2022	2-137-5-00-312	6-15	218331 ROCK		431.92		
369	HOLLIDAY	HOLLIDAY SAND & GRAVEL CO	98979 AP	06/24/2022	2-137-5-00-312	6-15	218331 ROCK		218.31		
369	HOLLIDAY	HOLLIDAY SAND & GRAVEL CO	98979 AP	06/24/2022	2-137-5-00-312	6-15	218331 ROCK		147.09		
369	HOLLIDAY	HOLLIDAY SAND & GRAVEL CO	98979 AP	06/24/2022	2-137-5-00-312	6-15	218331 ROCK		220.89		
369	HOLLIDAY	HOLLIDAY SAND & GRAVEL CO	98979 AP	06/24/2022	2-137-5-00-312	6-15	218331 ROCK		1,153.35		

START DATE: 06/18/2022 END DATE: 06/24/2022

TYPES OF CHECKS SELECTED: * ALL TYPES

		P.O. NUMBER	CHECK#							
369	HOLLIDAY		HOLLIDAY SAND & GRAVEL CO	98979 AP	06/24/2022	2-137-5-00-312	6-15 218331 ROCK	730.41		
369	HOLLIDAY		HOLLIDAY SAND & GRAVEL CO	98979 AP	06/24/2022	2-137-5-00-312	6-15 218331 ROCK	514.03		
369	HOLLIDAY	328516	HOLLIDAY SAND & GRAVEL CO	98979 AP	06/24/2022	2-137-5-00-312	6-16 218331	570.52		
369	HOLLIDAY	328516	HOLLIDAY SAND & GRAVEL CO	98979 AP	06/24/2022	2-137-5-00-312	6-16 218331	221.65		
369	HOLLIDAY	328516	HOLLIDAY SAND & GRAVEL CO	98979 AP	06/24/2022	2-137-5-00-312	6-16 218331	421.97		
369	HOLLIDAY	328516	HOLLIDAY SAND & GRAVEL CO	98979 AP	06/24/2022	2-137-5-00-312	6-16 218331	878.03		
369	HOLLIDAY	328516	HOLLIDAY SAND & GRAVEL CO	98979 AP	06/24/2022	2-137-5-00-312	6-15 218331 ROCK	446.47		
369	HOLLIDAY	328516	HOLLIDAY SAND & GRAVEL CO	98979 AP	06/24/2022	2-137-5-00-312	6-15 218331 ROCK	1,053.08		
369	HOLLIDAY	328516	HOLLIDAY SAND & GRAVEL CO	98979 AP	06/24/2022	2-137-5-00-312	6-15 218331 ROCK	862.49		
369	HOLLIDAY	328516	HOLLIDAY SAND & GRAVEL CO	98979 AP	06/24/2022	2-137-5-00-312	6-15 218331 ROCK	431.92		
369	HOLLIDAY	328516	HOLLIDAY SAND & GRAVEL CO	98979 AP	06/24/2022	2-137-5-00-312	6-15 218331 ROCK	218.31		
369	HOLLIDAY	328516	HOLLIDAY SAND & GRAVEL CO	98979 AP	06/24/2022	2-137-5-00-312	6-15 218331 ROCK	147.09		
369	HOLLIDAY	328516	HOLLIDAY SAND & GRAVEL CO	98979 AP	06/24/2022	2-137-5-00-312	6-15 218331 ROCK	220.89		
369	HOLLIDAY	328516	HOLLIDAY SAND & GRAVEL CO	98979 AP	06/24/2022	2-137-5-00-312	6-15 218331 ROCK	1,153.35		
369	HOLLIDAY	328516	HOLLIDAY SAND & GRAVEL CO	98979 AP	06/24/2022	2-137-5-00-312	6-15 218331 ROCK	730.41		
369	HOLLIDAY	328516	HOLLIDAY SAND & GRAVEL CO	98979 AP	06/24/2022	2-137-5-00-312	6-15 218331 ROCK	514.03		
								*** VENDOR	369 TOTAL	15,740.42
								TOTAL FUND 137		91,170.98

648	COMMERCE BANK-COMMER		COMMERCE BANK-COMMERCIAL CARDS	98965 AP	06/24/2022	2-138-5-00-203	IRON MOUNTAIN SHREDDING	44.96		
648	COMMERCE BANK-COMMER	328506	COMMERCE BANK-COMMERCIAL CARDS	98969 AP	06/24/2022	2-138-5-00-203	IRON MOUNTAIN SHREDDING	44.96		
								*** VENDOR	648 TOTAL	89.92
								TOTAL FUND 138		89.92

2621	CAFE		TERRY BOOKER	98961 AP	06/24/2022	2-145-5-00-256	COA MEALS RESERVED 6/1-6/17	5,974.50		
2621	CAFE		TERRY BOOKER	98961 AP	06/24/2022	2-145-5-00-256	COA MEALS RESERVED 6/1-6/17	10,116.75		
2621	CAFE		TERRY BOOKER	98961 AP	06/24/2022	2-145-5-00-256	COA MEALS RESERVED 6/1-6/17	9,828.00		
2621	CAFE	328502	TERRY BOOKER	98961 AP	06/24/2022	2-145-5-00-256	COA MEALS RESERVED 6/1-6/17	5,974.50		
2621	CAFE	328502	TERRY BOOKER	98961 AP	06/24/2022	2-145-5-00-256	COA MEALS RESERVED 6/1-6/17	10,116.75		
2621	CAFE	328502	TERRY BOOKER	98961 AP	06/24/2022	2-145-5-00-256	COA MEALS RESERVED 6/1-6/17	9,828.00		
								*** VENDOR	2621 TOTAL	51,838.50
648	COMMERCE BANK-COMMER		COMMERCE BANK-COMMERCIAL CARDS	98965 AP	06/24/2022	2-145-5-00-230	FLEETHOSTER JUNE SERVICE	670.39		
648	COMMERCE BANK-COMMER	328506	COMMERCE BANK-COMMERCIAL CARDS	98969 AP	06/24/2022	2-145-5-00-230	FLEETHOSTER JUNE SERVICE	670.39		
648	COMMERCE BANK-COMMER		COMMERCE BANK-COMMERCIAL CARDS	98965 AP	06/24/2022	2-145-5-00-246	IRON MOUNTAIN SHREDDING - CO O	55.95		
648	COMMERCE BANK-COMMER	328506	COMMERCE BANK-COMMERCIAL CARDS	98969 AP	06/24/2022	2-145-5-00-246	IRON MOUNTAIN SHREDDING - CO O	55.95		
								*** VENDOR	648 TOTAL	1,452.68
6601	NUTRI SYST		NUTRI SYSTEMS CORP	98990 AP	06/24/2022	2-145-5-09-200	ELECTRIC MEAL TRANSPORTERS X4+	5,040.00		
6601	NUTRI SYST		NUTRI SYSTEMS CORP	98990 AP	06/24/2022	2-145-5-09-200	ELECTRIC MEAL TRANSPORTERS X4+	151.56		
6601	NUTRI SYST	328527	NUTRI SYSTEMS CORP	98990 AP	06/24/2022	2-145-5-09-200	ELECTRIC MEAL TRANSPORTERS X4+	5,040.00		
6601	NUTRI SYST	328527	NUTRI SYSTEMS CORP	98990 AP	06/24/2022	2-145-5-09-200	ELECTRIC MEAL TRANSPORTERS X4+	151.56		
								*** VENDOR	6601 TOTAL	10,383.12
2	WATER DEPT	328470	WATER DEPT	98952 AP	06/22/2022	2-145-5-00-246	WATER/SEWER @ COUNCIL ON AGING	149.45		
								TOTAL FUND 145		63,823.75

648	COMMERCE BANK-COMMER		COMMERCE BANK-COMMERCIAL CARDS	98965 AP	06/24/2022	2-146-5-00-218	IRON MOUNTAIN SHREDDING	64.62		
648	COMMERCE BANK-COMMER	328506	COMMERCE BANK-COMMERCIAL CARDS	98969 AP	06/24/2022	2-146-5-00-218	IRON MOUNTAIN SHREDDING	64.62		
								*** VENDOR	648 TOTAL	129.24
								TOTAL FUND 146		129.24

648	COMMERCE BANK-COMMER		COMMERCE BANK-COMMERCIAL CARDS	98965 AP	06/24/2022	2-155-5-00-403	FLEETHOSTER JUNE SERVICE	139.65		
648	COMMERCE BANK-COMMER	328506	COMMERCE BANK-COMMERCIAL CARDS	98969 AP	06/24/2022	2-155-5-00-403	FLEETHOSTER JUNE SERVICE	139.65		
								*** VENDOR	648 TOTAL	279.30

TYPES OF CHECKS SELECTED: * ALL TYPES

		P.O. NUMBER	CHECK#					TOTAL FUND 155	279.30
26195	ADVANCE AUTO PARTS	GENERAL PARTS DISTRIBUTION		98954 AP	06/24/2022	2-160-5-00-213	670030 DEF,WASHER FLUIDS,O-RIN	123.03	
26195	ADVANCE AUTO PARTS	GENERAL PARTS DISTRIBUTION	328495	98954 AP	06/24/2022	2-160-5-00-213	670030 DEF,WASHER FLUIDS,O-RIN	123.03	
26195	ADVANCE AUTO PARTS	GENERAL PARTS DISTRIBUTION		98954 AP	06/24/2022	2-160-5-00-304	670030 DEF,WASHER FLUIDS,O-RIN	76.08	
26195	ADVANCE AUTO PARTS	GENERAL PARTS DISTRIBUTION		98954 AP	06/24/2022	2-160-5-00-304	670030 DEF,WASHER FLUIDS,O-RIN	22.02	
26195	ADVANCE AUTO PARTS	GENERAL PARTS DISTRIBUTION	328495	98954 AP	06/24/2022	2-160-5-00-304	670030 DEF,WASHER FLUIDS,O-RIN	76.08	
26195	ADVANCE AUTO PARTS	GENERAL PARTS DISTRIBUTION	328495	98954 AP	06/24/2022	2-160-5-00-304	670030 DEF,WASHER FLUIDS,O-RIN	22.02	
*** VENDOR 26195 TOTAL								442.26	
648	COMMERCE BANK-COMMER	COMMERCE BANK-COMMERCIAL CARDS		98967 AP	06/24/2022	2-160-5-00-208	TRANSFER STATION-TS-HHW, CONTR	275.90	
648	COMMERCE BANK-COMMER	COMMERCE BANK-COMMERCIAL CARDS	328506	98969 AP	06/24/2022	2-160-5-00-208	TRANSFER STATION-TS-HHW, CONTR	275.90	
648	COMMERCE BANK-COMMER	COMMERCE BANK-COMMERCIAL CARDS		98967 AP	06/24/2022	2-160-5-00-213	TRANSFER STATION J:EQUIP MAINT	1,524.44	
648	COMMERCE BANK-COMMER	COMMERCE BANK-COMMERCIAL CARDS	328506	98969 AP	06/24/2022	2-160-5-00-213	TRANSFER STATION J:EQUIP MAINT	1,524.44	
648	COMMERCE BANK-COMMER	COMMERCE BANK-COMMERCIAL CARDS		98965 AP	06/24/2022	2-160-5-00-215	FLEETHOSTER JUNE SERVICE	58.91	
648	COMMERCE BANK-COMMER	COMMERCE BANK-COMMERCIAL CARDS	328506	98969 AP	06/24/2022	2-160-5-00-215	FLEETHOSTER JUNE SERVICE	58.91	
648	COMMERCE BANK-COMMER	COMMERCE BANK-COMMERCIAL CARDS		98967 AP	06/24/2022	2-160-5-00-263	TRANSFER STATION-TS-HHW, CONTR	163.80	
648	COMMERCE BANK-COMMER	COMMERCE BANK-COMMERCIAL CARDS	328506	98969 AP	06/24/2022	2-160-5-00-263	TRANSFER STATION-TS-HHW, CONTR	163.80	
648	COMMERCE BANK-COMMER	COMMERCE BANK-COMMERCIAL CARDS		98967 AP	06/24/2022	2-160-5-00-301	TRANSFER STATION-TS-HHW, CONTR	496.70	
648	COMMERCE BANK-COMMER	COMMERCE BANK-COMMERCIAL CARDS	328506	98969 AP	06/24/2022	2-160-5-00-301	TRANSFER STATION-TS-HHW, CONTR	496.70	
648	COMMERCE BANK-COMMER	COMMERCE BANK-COMMERCIAL CARDS		98967 AP	06/24/2022	2-160-5-00-305	TRANSFER STATION J:EQUIP MAINT	79.78	
648	COMMERCE BANK-COMMER	COMMERCE BANK-COMMERCIAL CARDS	328506	98969 AP	06/24/2022	2-160-5-00-305	TRANSFER STATION J:EQUIP MAINT	79.78	
*** VENDOR 648 TOTAL								5,199.06	
17209	REDDI SERV	REDDI SERVICES		98991 AP	06/24/2022	2-160-5-00-263	JUNE SEPTIC - TRANSFER STATION	325.00	
17209	REDDI SERV	REDDI SERVICES	328528	98991 AP	06/24/2022	2-160-5-00-263	JUNE SEPTIC - TRANSFER STATION	325.00	
*** VENDOR 17209 TOTAL								650.00	
TOTAL FUND 160								6,291.32	
534	SANDS CONSTRUCTION	SANDS CONSTRUCTION LLC	328476	10133 AP	06/23/2022	2-172-5-00-107	ARPA065 2.2 3-21113.00 COA PRO	289,553.00	
534	SANDS CONSTRUCTION	SANDS CONSTRUCTION LLC	328476	10133 AP	06/23/2022	2-172-5-00-107	APRA066 2.3 3-21113.01 CRISIS	91,680.00	
534	SANDS CONSTRUCTION	SANDS CONSTRUCTION LLC	328476	10133 AP	06/23/2022	2-172-5-00-107	APRA067 2.4 3-21113.02 EXTENSI	80,569.00	
*** VENDOR 534 TOTAL								461,802.00	
TOTAL FUND 172								461,802.00	
1737	AT&T-CAROL STREAM IL	AT&T		98957 AP	06/24/2022	2-174-5-00-210	913A38-0682-421-2 CELL SVC 4 T	77.87	
1737	AT&T-CAROL STREAM IL	AT&T		98957 AP	06/24/2022	2-174-5-00-210	913A38-0682-421-2 CELL SVC 4 T	80.36	
1737	AT&T-CAROL STREAM IL	AT&T		98957 AP	06/24/2022	2-174-5-00-210	913A38-0682-421-2 CELL SVC 4 T	77.87	
1737	AT&T-CAROL STREAM IL	AT&T		98957 AP	06/24/2022	2-174-5-00-210	913A38-0682-421-2 CELL SVC 4 T	155.76	
1737	AT&T-CAROL STREAM IL	AT&T	328498	98957 AP	06/24/2022	2-174-5-00-210	913A38-0682-421-2 CELL SVC 4 T	77.87	
1737	AT&T-CAROL STREAM IL	AT&T	328498	98957 AP	06/24/2022	2-174-5-00-210	913A38-0682-421-2 CELL SVC 4 T	80.36	
1737	AT&T-CAROL STREAM IL	AT&T	328498	98957 AP	06/24/2022	2-174-5-00-210	913A38-0682-421-2 CELL SVC 4 T	77.87	
1737	AT&T-CAROL STREAM IL	AT&T	328498	98957 AP	06/24/2022	2-174-5-00-210	913A38-0682-421-2 CELL SVC 4 T	155.76	
*** VENDOR 1737 TOTAL								783.72	
TOTAL FUND 174								783.72	
26400	KANSAS GAS	KANSAS GAS SERVICE	328467	98949 AP	06/22/2022	2-195-5-00-290	510614745 1628631 73 GAS TRANS	81.38	
2	WATER DEPT	WATER DEPT	328470	98952 AP	06/22/2022	2-195-5-00-290	WATER SVC/SEWER COMM CORR BLDG	48.52	
TOTAL FUND 195								129.90	
648	COMMERCE BANK-COMMER	COMMERCE BANK-COMMERCIAL CARDS		98967 AP	06/24/2022	2-212-5-00-2	BG:FURNITURE,PUMP,BLDG COMOMDI	5,126.64	
648	COMMERCE BANK-COMMER	COMMERCE BANK-COMMERCIAL CARDS		98968 AP	06/24/2022	2-212-5-00-2	NH:BG,JC,SD2,EMPLOYEE LUNCH SU	87.94	
648	COMMERCE BANK-COMMER	COMMERCE BANK-COMMERCIAL CARDS		98968 AP	06/24/2022	2-212-5-00-2	NH:BG,JC,SD2,EMPLOYEE LUNCH SU	359.94	
648	COMMERCE BANK-COMMER	COMMERCE BANK-COMMERCIAL CARDS	328506	98969 AP	06/24/2022	2-212-5-00-2	BG:FURNITURE,PUMP,BLDG COMOMDI	5,126.64	

START DATE: 06/18/2022 END DATE: 06/24/2022

TYPES OF CHECKS SELECTED: * ALL TYPES

		P.O.NUMBER	CHECK#							
648	COMMERCE BANK-COMMER	COMMERCE BANK-COMMERCIAL CARDS	328506	98969 AP	06/24/2022	2-212-5-00-2	NH:BG,JC,SD2,EMPLOYEE LUNCH SU	87.94		
648	COMMERCE BANK-COMMER	COMMERCE BANK-COMMERCIAL CARDS	328506	98969 AP	06/24/2022	2-212-5-00-2	NH:BG,JC,SD2,EMPLOYEE LUNCH SU	359.94		
648	COMMERCE BANK-COMMER	COMMERCE BANK-COMMERCIAL CARDS		98967 AP	06/24/2022	2-212-5-00-3	BG:FURNITURE,PUMP,BLDG COMOMDI	84.37		
648	COMMERCE BANK-COMMER	COMMERCE BANK-COMMERCIAL CARDS	328506	98969 AP	06/24/2022	2-212-5-00-3	BG:FURNITURE,PUMP,BLDG COMOMDI	84.37		
								*** VENDOR	648 TOTAL	11,317.78
86	EVERGY	EVERGY KANSAS CENTRAL INC	328466	98948 AP	06/22/2022	2-212-5-00-2	ELEC SVC SEWER DIST 2	485.33		
86	EVERGY	EVERGY KANSAS CENTRAL INC	328466	98948 AP	06/22/2022	2-212-5-00-2	ELEC SVC SEWER DIST 2	69.78		
86	EVERGY	EVERGY KANSAS CENTRAL INC	328466	98948 AP	06/22/2022	2-212-5-00-2	ELEC SVC SEWER DIST 2	29.28		
86	EVERGY	EVERGY KANSAS CENTRAL INC	328466	98948 AP	06/22/2022	2-212-5-00-2	ELEC SVC SEWER DIST 2	153.10		
								*** VENDOR	86 TOTAL	737.49
								TOTAL FUND 212		12,055.27

648	COMMERCE BANK-COMMER	COMMERCE BANK-COMMERCIAL CARDS		98967 AP	06/24/2022	2-215-5-03-213	BG:FURNITURE,PUMP,BLDG COMOMDI	725.00		
648	COMMERCE BANK-COMMER	COMMERCE BANK-COMMERCIAL CARDS	328506	98969 AP	06/24/2022	2-215-5-03-213	BG:FURNITURE,PUMP,BLDG COMOMDI	725.00		
								*** VENDOR	648 TOTAL	1,450.00
								TOTAL FUND 215		1,450.00

2570	BOND ESCROW REFUND	ASHLEE & DANIEL WILLIAMS		98959 AP	06/24/2022	2-503-5-00-2	REFUND ENTRANCE PERMIT RAGTOWN	100.00		
2570	BOND ESCROW REFUND	ASHLEE & DANIEL WILLIAMS	328500	98959 AP	06/24/2022	2-503-5-00-2	REFUND ENTRANCE PERMIT RAGTOWN	100.00		
								*** VENDOR	2570 TOTAL	200.00
								TOTAL FUND 503		200.00

268	LIFELOCK	NORTONLIFELOCK INC	328468	98950 AP	06/22/2022	2-510-2-00-941	1247233 JUNE PREMIUMS	1,655.42		
1485	RELIANCE STANDARD	RELIANCE STANDARD	328469	98951 AP	06/22/2022	2-510-2-00-962	GL144512 GROUP LIFE&VOLUNTARY	1,549.56		
1485	RELIANCE STANDARD	RELIANCE STANDARD	328469	98951 AP	06/22/2022	2-510-2-00-965	GL144512 GROUP LIFE&VOLUNTARY	2,942.28		
1485	RELIANCE STANDARD	RELIANCE STANDARD	328469	98951 AP	06/22/2022	2-510-2-00-965	GL144512 GROUP LIFE&VOLUNTARY	80.79		
								*** VENDOR	1485 TOTAL	4,572.63
								TOTAL FUND 510		6,228.05
								TOTAL ALL CHECKS		1,056,513.78

TYPES OF CHECKS SELECTED: * ALL TYPES

FUND SUMMARY

001	GENERAL	283,919.03
108	COUNTY HEALTH	36,434.44
115	EQUIPMENT RESERVE	10,704.00
121	JUVENILE JUSTICE AUTHORITY	26,424.70
123	JUVENILE CRIME PREVENTION	5,612.48
126	COMM CORR ADULT	614.04
127	COMM CORR ADULT NON GRANT	930.50
133	ROAD & BRIDGE	44,283.22
136	COMM CORR JUVENILE	3,157.92
137	LOCAL SERVICE ROAD & BRIDGE	91,170.98
138	JUV INTAKE & ASSESSMENT	89.92
145	COUNCIL ON AGING	63,823.75
146	COUNTY TREASURER SPECIAL	129.24
155	LSR CAPITAL EQUIP RESERVE	279.30
160	SOLID WASTE MANAGEMENT	6,291.32
172	AMERICAN RECOVERY PLAN	461,802.00
174	911	783.72
195	JUVENILE DETENTION	129.90
212	SEWER DISTRICT 2: TIMBERLAKES	12,055.27
215	CAPITAL IMPROVEMENTS	1,450.00
503	ROAD & BRIDGE BOND ESCROW	200.00
510	PAYROLL CLEARING	6,228.05
	TOTAL ALL FUNDS	1,056,513.78

Consent Agenda 6-29-22
Checks dated 6/18 - 6/24

**Leavenworth County
Request for Board Action
Resolution 2022- 13
Special Use Permit
Hidden Valley Wilderness Retreat**

Date: June 29, 2022

To: Board of County Commissioners

From: Planning & Zoning Staff

Department Head Review: Krystal Voth, Reviewed

Additional Reviews as needed:

Budget Review Administrator Review Legal Review

Action Requested: Approve Resolution 2022-13, a request for the renewal of a Special Use Permit for Hidden Valley Wilderness Retreat, which includes expansion of the existing facility. The original permit was granted in 2017.

Analysis: The applicant is requesting to expand an existing Special Use Permit to include 9 additional self-sustaining treehouses/cabins and one camping site. All cabins will use a septic system for waste disposal. The applicant has provided additional plans for the remodel of an existing garage into a meeting space with kitchen and bathrooms, as well as a small welcome center and bathhouse. The site currently holds 3 approved treehouse/cabins, a pavilion and other accessory structures for the campground. Due to the large size of the property, over 31 acres, and the proposed locations of the additional cabins, Staff feels that the proposed sites would not impact surrounding properties. Parking is provided on-site; additional parking may be required as needed. The property does have a series of hiking trails, which the previous SUP allowed for up to 36 daily hikers. The narrative indicates that the campground is open from mid-spring to early December, however the owners may decide to hardscape the driveway at which time they would like to keep it open year-round.

Planning Commission Recommendation: The Planning Commission voted 8-0 (1 absent) to recommend approval of Resolution 2022-13 (Case No. DEV-22-030) renewal of a Special Use Permit for Hidden Valley Wilderness Retreat.

Alternatives:

1. of Resolution 2022-13 (Case No. DEV-22-030) renewal of a Special Use Permit for Hidden Valley Wilderness Retreat, with Findings of Fact, and with or without conditions; or
2. of Resolution 2022-13 (Case No. DEV-22-030) renewal of a Special Use Permit for Hidden Valley Wilderness Retreat, with Findings of Fact; or
3. Revise or Modify the Planning Commission Recommendation of Resolution 2022-13 (Case No. DEV-22-030) renewal of a Special Use Permit for Hidden Valley Wilderness Retreat, with Findings of Fact; or
4. Remand the case back to the Planning Commission.

Budgetary Impact:

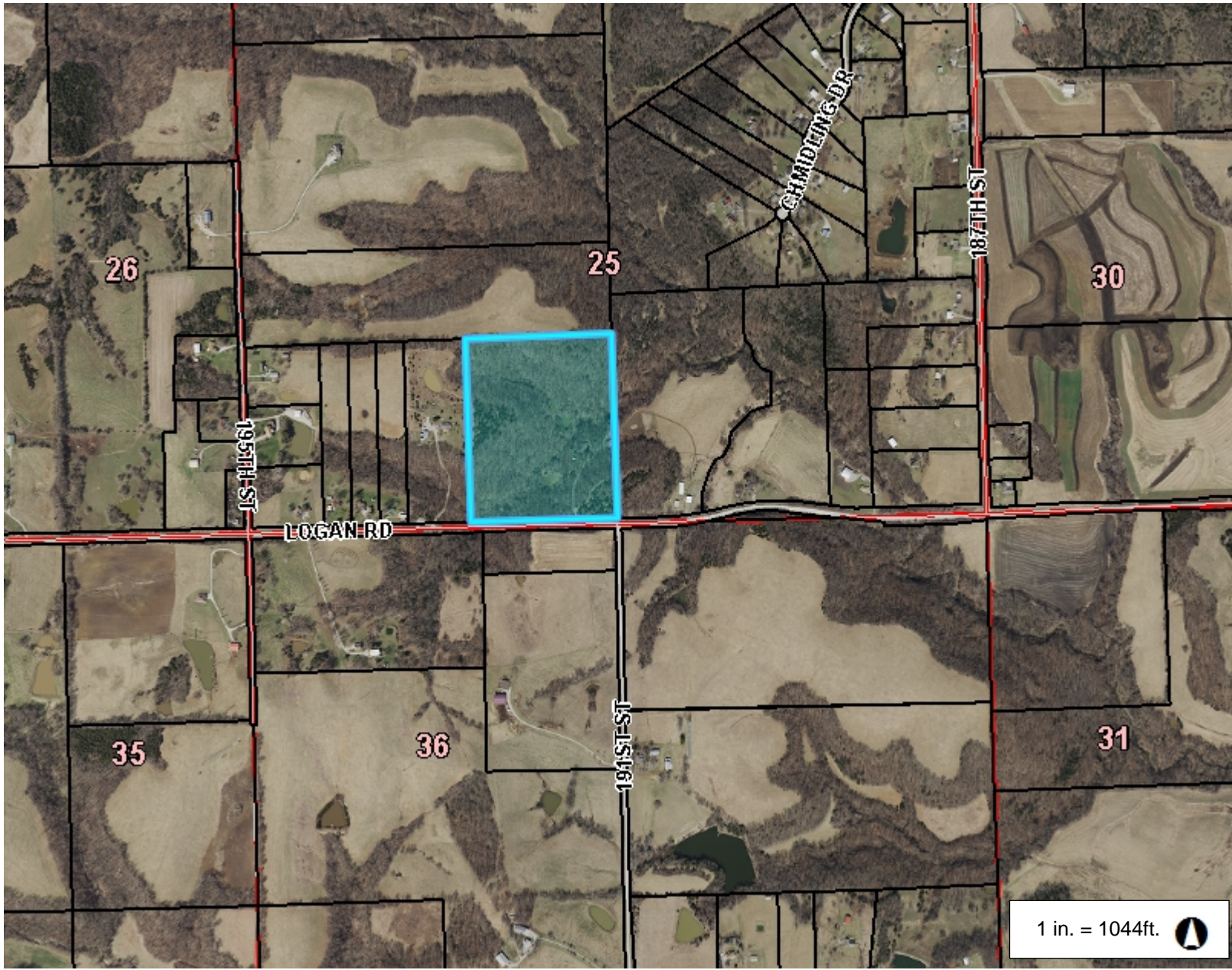
- Not Applicable
- Budgeted item with available funds
- Non-Budgeted item with available funds through prioritization
- Non-Budgeted item with additional funds requested

Total Amount Requested:

\$0.00

Additional Attachments: Staff Report, Planning Commission Minutes

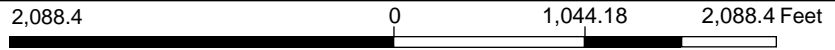
DEV-22-030



Legend

- Parcel
- City Limit Line
- Major Road
 - <all other values>
 - 70
- Road
 - <all other values>
 - PRIVATE
- Railroad
- Section
- Section Boundaries
- County Boundary

1 in. = 1044ft.



This Cadastral Map is for informational purposes only. It does not purport to represent a property boundary survey of the parcels shown and shall not be used for conveyances or the establishment of property boundaries.
THIS MAP IS NOT TO BE USED FOR NAVIGATION

Notes

LEAVENWORTH COUNTY

BOCC

STAFF REPORT

CASE NO: DEV-22-030 Hidden Valley Wilderness Retreat

June 29, 2022

REQUEST: *Public Hearing Required*

- Zoning Amendment Special Use Permit
 Temporary Special Use Permit

STAFF REPRESENTATIVE:

KRYSTAL VOTH
DIRECTOR

SUBJECT PROPERTY:

APPLICANT/APPLICANT AGENT:

STAN & DENISE WOOD
19190 LOGAN RD
EASTON, KS 66020

PROPERTY OWNER:

STAN & DENISE WOOD

CONCURRENT APPLICATIONS:

N/A

LAND USE

ZONING: RR-2.5

FUTURE LAND USE DESIGNATION:
RESIDENTIAL (2.5 ACRES MIN)

LEGAL DESCRIPTION:

A tract of land in the South Half of the Southwest Quarter of Section 25, Township 7 South, Range 21 East of the 6th P.M., Leavenworth County, Kansas

SUBDIVISION: N/A

FLOODPLAIN: N/A

STAFF RECOMMENDATION: DENIAL

PROPERTY INFORMATION

ACTION OPTIONS:

1. of Resolution 2022-13 (Case No. DEV-22-030) renewal of a Special Use Permit for Hidden Valley Wilderness Retreat, with Findings of Fact, and with or without conditions; or
2. of Resolution 2022-13 (Case No. DEV-22-030) renewal of a Special Use Permit for Hidden Valley Wilderness Retreat, with Findings of Fact; or
3. Revise or Modify the Planning Commission Recommendation of Resolution 2022-13 (Case No. DEV-22-030) renewal of a Special Use Permit for Hidden Valley Wilderness Retreat, with Findings of Fact; or
4. Remand the case back to the Planning Commission.

PARCEL SIZE: 31.20 ACRES

PARCEL ID NO:
037-25-0-00-00-010.00

BUILDINGS:
EXISTING: HOUSE, 13
TREEHOUSES/CABINS, AND 2
ACCESSORY STRUCTURES

PROJECT SUMMARY:

Request for Special Use Permit to expand an existing campground at 19190 Logan Road.

ACCESS/STREET:
LOGAN ROAD
COUNTY ARTERIAL 25' WIDE

Location Map:



UTILITIES

SEWER: SEPTIC

FIRE: KICKAPOO

WATER: RWD 12

ELECTRIC: FREESTATE

NOTICE & REVIEW:

STAFF REVIEW: N/A

NEWSPAPER NOTIFICATION:
5/18/2022

NOTICE TO SURROUNDING
PROPERTY OWNERS:
5/17/2022

--	--

FACTORS TO BE CONSIDERED:		
<i>The following factors are to be considered by the Planning Commission and the Board of County Commissioners when approving or disapproving this Special Use Permit request:</i>	Met	Not Met
<p>1. Character of the Neighborhood:</p> <p><i>Density:</i> The surrounding properties range in size from 4.2 acres to over 80 acres.</p> <p><i>Nearby City Limits:</i> The City of Easton is more than 6 miles to the southwest.</p> <p><i>Initial Growth Management Area:</i> This parcel is located within the Rural Growth Area.</p>	✓	
<p>2. Zoning and uses of nearby property:</p> <p><i>Adjacent Uses:</i> Most of the adjacent parcels are residential and agricultural in nature.</p> <p><i>Adjacent Zoning:</i> All adjacent properties are zoned RR-2.5.</p>	✓	
<p>3. Suitability of the Property for the uses to which is has been restricted:</p> <p>The subject property is more than 31 acres in size. A campground is allowed with a special use permit and is a use that is within the character of a rural area. The property owner was approved for a Special Use Permit in 2016 for three treehouses and a pavilion to hold small events. Since that time, the applicant has expanded their operation to include 1 additional treehouses/cabins and 1 camping site. The applicant has included plans to expand further by adding 8 additional treehouse/cabins, refinishing an existing garage into a meeting space and adding a small Welcome Center and bathhouse. The maximum occupancy for the proposed treehouses will be 26 occupants. The property also includes hiking trails and other amenities.</p>	✓	
<p>4. Extent to which removal of the restrictions will detrimentally affect nearby property:</p> <p><i>Noise Pollution:</i> The proposed use will not cause noise that is out of character for a rural neighborhood. Staff recommends placing a condition to limit noise to 60 dB, as measured from the property line.</p> <p><i>Traffic:</i> The additional traffic generated will be minimal and likely not noticeable by adjacent landowners. Public Works has reviewed the proposed traffic and indicated that no traffic impact study or impact fee is required per County policy.</p> <p><i>Lighting:</i> All treehouses/cabins include electricity. Due to the size of the property and proposed locations of the cabins, the proposed lighting will have minimal impact on surrounding properties. Staff recommends placing a condition to limit light pollution to 0.00 foot candles, as measured from the property line.</p> <p><i>Outdoor Storage:</i> No outdoor storage is proposed.</p> <p><i>Parking:</i> Existing parking is sufficient to support the proposed additions. If more parking is needed the site, has sufficient room.</p>	✓ (Condition 7) ✓ ✓ (Condition 8) ✓ ✓	

<p><i>Visitors/Employees: The applicant has indicated that the maximum occupancy for the existing and proposed treehouses/cabins and campsites is 26. The previous Special Use Permit was approved for up to 36 daily hikers and for small events. Currently two employees (owners) are on-site but the applicant has requested additional staff of up to 8 employees as well as seasonal/construction workers.</i></p> <p><i>Waste: The property uses septic systems for human waste. All waste shall be disposed of in accordance with local, state and federal requirements.</i></p>	<p style="text-align: center;">✓ (Condition 6)</p> <p style="text-align: center;">✓ (Condition 9)</p>	
<p>5. Length of time the property has been vacant as zoned: <input type="checkbox"/> Vacant <input checked="" type="checkbox"/> Not Vacant:</p>	<p style="text-align: center;">✓</p>	
<p>6. Relative gain to economic development, public health, safety and welfare: The proposed application would allow for the expansion of an existing business within Leavenworth County. There does not appear to be any detrimental effects to the public health, safety or welfare.</p>	<p style="text-align: center;">✓</p>	
<p>7. Conformance to the Comprehensive Plan: <i>Future Land Use Map: Residential (2.5 acres min.)</i> <i>Section 4 Land Use and Development Plan Strategies: The proposed use is not compatible with the future land use designation.</i></p>		<p style="text-align: center;">✓</p>

STAFF COMMENTS:

The applicant is requesting to expand an existing Special Use Permit to include 9 additional self-sustaining treehouses/cabins and one camping site. All cabins will use a septic system for waste disposal. The applicant has provided additional plans for the remodel of an existing garage into a meeting space with kitchen and bathrooms, as well as a small welcome center and bathhouse. The site currently holds 3 approved treehouse/cabins, a pavilion and other accessory structures for the campground. Due to the large size of the property, over 31 acres, and the proposed locations of the additional cabins, Staff feels that the proposed sites would not impact surrounding properties. Parking is provided on-site; additional parking may be required as needed. The property does have a series of hiking trails, which the previous SUP allowed for up to 36 daily hikers. The narrative indicates that the campground is open from mid-spring to early December, however the owners may decide to hardscape the driveway at which time they would like to keep it open year-round.

STAFF RECOMMENDED CONDITIONS:

1. The business shall operate from sunrise to sunset, but access to the cabins and campsites shall be 24 hours.
2. The SUP shall be limited to eight (8) employees other than the property owners.
3. The applicant shall provide a certificate of general liability insurance in the amount of \$1,000,000 and shall indicate Leavenworth County as the certificate holder prior to commencement of activities on the site.
4. No signage shall be allowed in the right-of-way. Sign permits shall be required for any on-site or off-site signage. The applicant shall provide an owner authorization form for any off-site signs. All signage shall comply with Article 25, Sign Regulations of the Leavenworth County Zoning and Subdivision Regulations.
5. No on-street parking shall be allowed.
6. The business shall be limited to 12 cabins and one campsite and a maximum occupancy of 26 overnight guests. A maximum occupancy of 36 guests for daily usage of the property.
7. Any noise generated from the proposed business shall be limited to 60 dB, as measured from the property line.

8. Any light generated from the proposed business shall be limited to 0.00 foot-candles, as measured from the property line.
9. All waste generated from the proposed business shall be disposed of in a manner that meets all local, state and federal requirements. An engineered septic system shall be required.
10. This SUP shall comply with all local, state, and federal rules and regulations that may be applicable.
11. The applicant shall obtain all applicable building permits prior to construction of any buildings.
12. The Special Use Permit shall be subject to the written narratives provided on February 24, 2022.
13. After approval of this SUP by the Board of County Commissioners all conditions listed shall be adhered to and copies shall be provided to the Planning and Zoning Office before the Special Use Permit shall take effect.

ATTACHMENTS:

A: Application & Narrative

B: Zoning Map

C: Memorandums

SPECIAL USE PERMIT APPLICATION

Leavenworth County Planning Department
300 Walnut, St., Suite 212
County Courthouse
Leavenworth, Kansas 66048
913-684-0465

APPLICANT/AGENT INFORMATION	OWNER INFORMATION (If different)
NAME <u>Hidden Valley Wilderness Retreat</u>	NAME <u>Stan & Denise Wood</u>
ADDRESS <u>19190 Logan Rd.</u>	ADDRESS <u>19190 Logan Rd.</u>
CITY/ST/ZIP <u>Easton, KS 66020</u>	CITY/ST/ZIP <u>Easton, KS 66020</u>
PHONE <u>(913) 651-7966</u>	PHONE <u>(913) 268-5871</u>
EMAIL <u>Hiddenvalleywilderness@gmail.com</u>	EMAIL <u>EMATE?</u>
CONTACT PERSON <u>Stan or Denise Wood</u>	CONTACT PERSON <u>?</u>

PROPERTY INFORMATION

PID: _____ Zoning District: _____
Address of property 19190 Logan Rd Easton, KS 66020 Parcel size _____
Current use of the property Retreat Center
Does the owner live on the property? Yes No

I, the undersigned am the (circle one) owner, duly authorized agent, of the aforementioned property situated in the unincorporated portion of Leavenworth County, Kansas. By execution of my signature, I do hereby officially apply for a Special Use Permit as indicated above. I hereby agree to "cease and desist" the operation of the activity upon denial of the permit by the Board of County Commissioners.

Signature Denise J. Wood Date 1/08/2022

ATTACHMENT A

PROPOSED SPECIAL USE PERMIT INFORMATION

Name of Business Hidden Valley Wilderness Retreat
Existing and Proposed Structures 3 Treehouse/cabins, 1 Retreat house + 1 Garage (Current)
Number of structures used for Special Use Permit 4 Current Proposed (next 10yrs = 8 addl treehouses/cabins)
Will the use require parking? Yes No How many parking spaces are proposed/available? N/A
Is the proposed use seasonal? Yes No
If yes, what months will the use be active? March through November
Reason for requesting a Special Use Permit: Renewal for 10yrs + expansion.

Estimated Traffic

In this section, you are determining the impact your proposed use will have on the county roadways. A vehicle visiting your site is to be considered two trips because the visitor/employee/user will use the roadways twice. If you are planning to expand the use that may generate additional traffic during the duration of the permit, provide the traffic generation for the full expansion.

How many total Passenger vehicle trips (both entering and exiting) will be generated by the Special Use Permit?
Daily 10 Weekly 70 Monthly 300

If applicable, how many total Commercial (delivery, heavy trucks, equipment, etc.) vehicle trips (both entering and exiting) will be generated by the Special Use Permit?
Daily _____ Weekly _____ Monthly 0

If applicable, describe Seasonal trips not accounted for above: What type (Passenger and Commercial) vehicle trips, how many trips per vehicle type in the seasonal timeframe, and describe the seasonal time frame (months, weeks, or days in a calendar year.

Passenger: Months _____ Weeks _____ Days _____
Commercial: Months _____ Weeks _____ Days _____

When are trips to the site expected to occur (i.e. throughout the day, limited certain hours, etc.)? If applicable, separate occurrences by vehicle type (Passenger, Commercial, Seasonal Passenger, and Seasonal Commercial):

2-4 gravel trucks/year; 1 septic truck/year
4/month; UPS, Fedex or Amazon

What is the anticipated route(s) from the nearest State Highway to the Site? 73 Hwy -> 2.3 miles east on Logan Rd.

Special Use Permit Renewal

Describe any change to operations since the SUP was last issued including traffic trips compared to this SUP:

The retreat is adult only and is only seasonally operated March - November. The retreat did not host weddings and does not plan for wedding events in future.

Have you added any buildings since the SUP was last issued? Yes No Any parking? Yes No

Except! ATTACHMENT B Bathhouse not added

Narrative Description:

The 19190 Logan Rd, Easton, KS property has been adapted into a retreat lodging center serving as an individual private use destination for peaceful rest and renewal. This retreat offers no organized programs. The adult only retreat lodging is currently open March - November. The request to extend the special use for the retreat is in continuation with current operations and goals set forth in the initial plan.

SUP Goals Fulfilled in 5-Year Plan/Existing Structures and Lodging Capacity:

- The Suite – South Suite of the original Retreat House (2 Adults) (The Retreat house is like a duplex.) Currently, retreat managers reside in the North Suite of the retreat house.
- Serenity Creek Treehouse/Cabin (2 Adults)
- Graham’s Treehouse/Cabin (2 Adults)
- Whispering Elm Treehouse/Cabin (2- 4 Adults)
- Approximately 2 miles of hiking trails
- Hot Tub Pavilion
- Engineered septic system installed
- Large garage/shed
- 1 Glamping Site (Glamorous Camping Site) (2 Adults)

Structures have been built in a high-quality cohesive cabin look to reflect the tranquil beauty of the wilderness surroundings.

The retreat owners and guests have had a positive reciprocal relationship with locally owned eateries and businesses. The retreat is a member of Leavenworth Mainstreet Business Group. All guests are encouraged to shop and eat locally.

The retreat has welcomed the local volunteer fire department to location for training purposes.

Plans from Initial SUP (Unfulfilled):

- Day visitors (Hiking only/no lodging)
 - Unregistered visitors are not allowed on grounds for sole purpose of hiking. Grounds are only available to registered guests lodging on site.
- Bathhouse
 - Build plans carried forward
- Small wedding events
 - No wedding events have been held on the grounds. No future plans to use the retreat as a wedding venue.
- Additional parking area at entrance
 - Additional parking has not been needed/developed. No future plans.

Proposed Additions 10-Year Plan:

- Additional 8 luxury treehouse/cabins/rental sites. (2 adults/rental) These sites/rentals will be built to be cohesive in appearance to the current structures and blend with the natural habitat. Structures will be spaced so that guests will continue to enjoy the peaceful seclusion of the wilderness 32 acreage and while giving buffer to retreat neighboring properties.
- The existing garage will be finished as a gathering space for use when all units are rented by same family or entity. (The Gathering Place) An open meeting space, restrooms, a kitchen (for caterers) will comprise 'The Gathering Place' facility. A laundry facility for retreat personnel/operations will be added to The Gathering Place facility.
- A small Welcome Center structure for guest check-in/check-out
- Additional septic systems will be added to support new cabin/treehouse builds. (See attachment)

Operations:

Currently, the retreat is open mid-spring through late November/early December. Due to the steep gravel drive in/out of the valley, the retreat has been closed in the winter months for guests' safety. If the drive becomes hard surfaced, consideration for opening in winter months will be re-evaluated. A staff member is on duty whenever guests are present.

Duration:

This Special Use Permit is requested for an additional 10 years, with operations planned indefinitely.

Traffic:

Traffic will be primarily limited to guests accessing the property through the main entrance on Logan Road. Typically, 1 vehicle per rental unit is the norm. Rarely, a rental will have 2 vehicles and requires permission from hosts. Traffic has been directed to access Edwards Drive/Logan Road from Highway 7/73. Parking will be on-site.

Suitability:

The property remains suitable for the proposed 10-year expansion of operations for multiple reasons:

1. The retreat has been successful with excellent guests in the past 5 years. Booking for 2021 was @ 90-95% capacity.
2. The isolation of the property from neighbors has provided an ideal setting for guests, without disturbing neighbors. The retreat is marketed for adults wanting peace, quiet, rest and renewal. We strictly enforce a respectful atmosphere of peace and quiet from our guests.
3. The natural forested setting, terrain of the property, peacefulness and tranquility has been a draw for guests wanting to escape for a short time from the stresses of modern life.

4. The positive relationship with local businesses is a win-win for guests and small business owners.
5. With a total land area of 32 acres, there is sufficient room for the planned structures while providing privacy for our neighbors and our guests.
6. The retreat is a member of Kansas Agri-tourism.

Pollution:

The retreat encourages all guests to be earth friendly. Recycling is encouraged. No pollution will be created from the increased use of the property for lodging.

Effect on Adjoining Properties:

Adjoining properties will continue to be shielded from operations by a significant buffer of trees and land. Structures will be erected with buffer well beyond the minimum clearances required by zoning codes. The thick woods, in addition to the location in a valley, will block most, if not all, the sounds generated by operations. Signs have been placed on trail maps, at the end of any connecting trails, and appropriately spaced on the property line, clearly directing guests not to enter adjoining properties. Currently, relationships with neighbors are in positive standings.

Additional Considerations:

Understanding how to maintain a healthy forest and education was precured from the Kansas State Northeast Kansas Director of Forestry Services. The retreat has implemented controlled burns, removed dying/dead ash and elm trees, cleared brush and noxious weeds/plants/scrubs. This is an ongoing process. This management is necessary for maintenance of a healthy forest and to avoid out of control dangerous wildfires.

Benefit to Local Economy

The retreat property has drawn many guests to the Leavenworth area from the Kansas City metropolitan areas, across the state, Nebraska, Missouri, Iowa, South Dakota, Oklahoma, Minnesota and beyond. A large portion of our guests are returning guests with subsequent longer stays in order to further explore the area and all Leavenworth has to offer. (Leavenworth Mainstreet deserves major kudos in making the downtown a destination for visitors!) The retreat will continue to encourage guests to take advantage of the shops, restaurants, and services in Leavenworth, in addition to the many points of interest in the surrounding vicinity.

Employees (Owner operated)

- Two (current)
- Contractors utilized for house-keeping and short-term aspects of construction projects.
- More employees will be added as the retreat expands.
 - 1-2 Ground keeping/maintenance staff members
 - 3-4 Housecleaning team members
 - 1-2 Manager/hospitality team members

Emergency/Safety

All guests are informed of the storm shelter area and safety guidelines. These safety areas and guidelines are posted in each retreat area.

- A storm shelter area is located under the north end of the current retreat house.
- Each rental area has/will have smoke alarms and fire extinguishers.
- Emergency phone numbers are posted in rentals and a landline is available for guest's use as needed.
- An internet relay tower has been erected to aid in guest internet connectivity, and to facilitate wifi calling and outside communication. The retreat is in a 'dead zone' for rural reception.
- Additionally, First-aid kits are provided in each retreat area.
- Trail maps are provided to all guests and are located at all trailheads. (No guests have ever been lost) Trails are clearly marked.
- Hazards of wildlife are on trail maps, written communications and additional signage communicates wilderness habitat precautions.
- For safety, hikers are directed to start hikes no earlier than sunrise, no later than 1 hour prior sundown and to stay on the trails.
- No trail hiking in adverse weather.
- Area lighting will illuminate the parking and common areas
- Walkway/porch lighting is/will be provided for overnight guests

Additional Builds for 10 Year Plan:

Phase 1

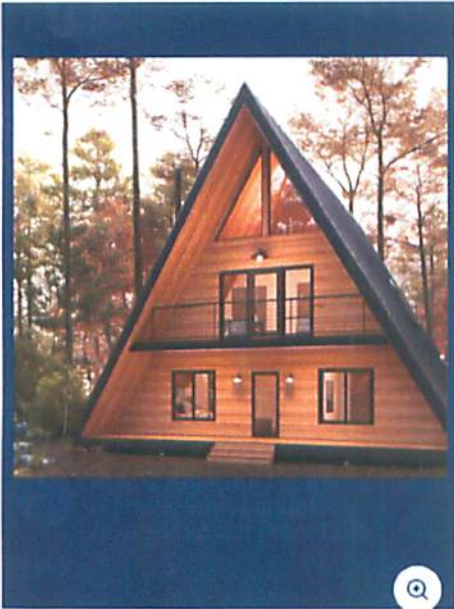
Welcome Center

- Location: east of entrance
- Approx. dimensions: 12 ft x 24 ft
- Photo representative of structural build style. Exterior finish with the cedar cabin look.



Treehouse/cabin #4 Cottonwood

- Location (See map)
- Appox. Dimensions: 24 ft x 16 ft
- Photo representative of build style
- 2 Guest Occupancy



Treehouse/Cabin #5, #6 and #7 Ridgeview

- Location (See map)
- Photo representative of build style
- Appox. Dimensions: 24 ft x 16 ft
- Each build has similar internal amenities, unique exterior finish style
- 2 Guests Occupancy per rental



Phase II

Treehouse/cabin #8 Oak Grove

- Location (See map)
- Photo representative of build style
- Appox. Dimensions: 20 ft x 12 ft
- 2 Guest Occupancy



Treehouse/cabin #9 Basswood

- Location (See map)
- Photo representative of build style
- Appox. Dimensions: 24 ft x 16 ft
- 2 Guest Occupancy



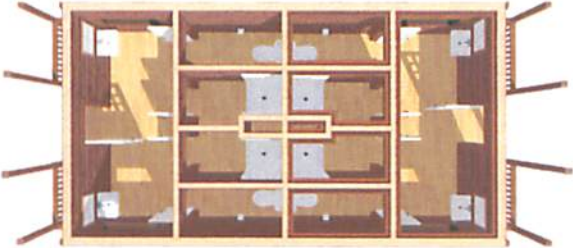
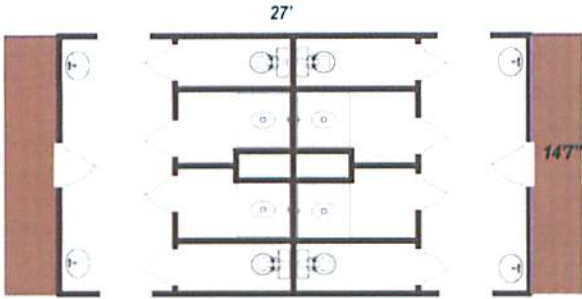
Treehouse/cabin #10 Emerald City Perch

- Location (See map)
- Photo representative of build style
- Appox. Dimensions: 24 ft x 16 ft
- 2 Guest Occupancy



Bathroom (Unfinished from Prior 5 Year SUP Plan)

- Size: 27' x 14'7"
- Space for four sinks, four showers and four toilets
- ADA accessible



Hidden Valley Wilderness Retreat SUP Renewal Plan

Graham's Treehouse/ Cabin



Serenity Creek Treehouse/ Cabin



Whispering Elm Treehouse/ Cabin



The Suite - Main Retreat House



Trail Map



Please Stay on Trails
Hiking in a Wildlife Habitat
Steep Climbs
Respect Nature & Neighbors
Observe: No Trespassing Signs
Wind Dangers/ Falling limbs
Trail Cameras 😊
Trails Open at Sunrises – Close at Sunset
Hiking Time: Approx 1.5 hrs.
NO Guests Have Been lost!!

Voth, Krystal

From: Mitch Pleak <mpleak@olsson.com>
Sent: Thursday, March 31, 2022 2:23 PM
To: Voth, Krystal
Cc: Noll, Bill; 019-2831
Subject: RE: DEV-22-030 Hidden Valley Wilderness Retreat

Notice: This email originated from outside this organization. Do not click on links or open attachments unless you trust the sender and know the content is safe.

Krystal,
Good afternoon. Olsson has reviewed the SUP. SUP is an renewal. Estimated daily traffic is below 50 trips per day therefore doesn't not require a traffic impact study per the traffic impact policy. No comments.

Sincerely,

Mitch Pleak

From: Noll, Bill <BNoll@leavenworthcounty.gov>
Sent: Monday, March 28, 2022 4:31 PM
To: Mitch Pleak <mpleak@olsson.com>
Subject: FW: DEV-22-030 Hidden Valley Wilderness Retreat

From: Voth, Krystal
Sent: Monday, March 28, 2022 4:26 PM
To: Noll, Bill <BNoll@leavenworthcounty.gov>
Subject: DEV-22-030 Hidden Valley Wilderness Retreat

Bill,

We have received an application for a Special Use Permit for Hidden Valley. They were originally approved in 2017, but are expanding their operations. Please review and provide any comments by Monday, April 11, 2022. If you have any questions, or need any additional information, please let me know. Thanks and have a good day.

Respectfully,

Krystal A. Voth, CFM
Director
Planning & Zoning
Leavenworth County
913.684.0461

Voth, Krystal

From: RURAL WATER DIST <water12@embarqmail.com>
Sent: Tuesday, April 19, 2022 9:38 AM
To: Voth, Krystal
Subject: Re: DEV-22-030 SUP Request for Hidden Valley Retreat

Notice: This email originated from outside this organization. Do not click on links or open attachments unless you trust the sender and know the content is safe.

Krystal,
My Board has indicated that Hidden Valley Properties does not need to obtain additional water services from Jf.Co. RWD #12, IF the property continues to be a retreat as currently requested on the Special Use Permit , If the property becomes anything else but what is stated in the SUP, this matter will need to be revisited by RWD #12. We have no additional comment on this matter at this time.
Thank you,
Denise Eggers

From: "Krystal Voth" <KVoth@leavenworthcounty.gov>
To: "RURAL WATER DIST" <water12@embarqmail.com>
Sent: Friday, April 1, 2022 2:21:38 PM
Subject: RE: DEV-22-030 SUP Request for Hidden Valley Retreat

Denise,

Thank you for letting me know.

Krystal

From: RURAL WATER DIST <water12@embarqmail.com>
Sent: Friday, April 1, 2022 11:37 AM
To: Voth, Krystal <KVoth@leavenworthcounty.gov>
Subject: Re: DEV-22-030 SUP Request for Hidden Valley Retreat

Notice: This email originated from outside this organization. Do not click on links or open attachments unless you trust the sender and know the content is safe.

Krystal,
Jefferson County RWD #12 could have issue with this request. They may need to purchase additional water meters because of the additional living quarters. We are not certain that we can supply water to these facilities. We have not had any contact with the landowner regarding this matter. This will be presented to our Board at the April 18, 2022 meeting.
Respectfully,
Denise Eggers

From: "Krystal Voth" <KVoth@leavenworthcounty.gov>
To: "paul.brugh@freestate.coop" <paul.brugh@freestate.coop>, "water12@embarqmail.com" <water12@embarqmail.com>, "Magaha, Chuck" <cmagaha@lvsheriff.org>, "Butch Bollin"

<butchbollin@yahoo.com>

Sent: Monday, March 28, 2022 4:29:58 PM

Subject: DEV-22-030 SUP Request for Hidden Valley Retreat

All,

Good afternoon. We have recently received an application for a Special Use Permit for Hidden Valley Retreat. The address is 19190 Logan Road. Your written input and consideration is greatly appreciated by Monday, April 4. If you have any questions, or need additional information, please let me know. Thank you and have a great day.

Respectfully,

Krystal A. Voth, CFM

Director

Planning & Zoning

Leavenworth County

913.684.0461

--

Denise Eggers, Bookkeeper/Office Mgr.

Jefferson County RWD #12

216 Winchester St.

Winchester, KS 66097

(913)774-2872 phone

(913)774-2875 fax

Email water12@embarqmail.com

--

Denise Eggers, Bookkeeper/Office Mgr.

Jefferson County RWD #12

216 Winchester St.

Winchester, KS 66097

(913)774-2872 phone

(913)774-2875 fax

Email water12@embarqmail.com

RESOLUTION 2022-13

A resolution of the Leavenworth County Kansas Board of County Commission, issuing a Special Use Permit for a campground – Hidden Valley Wilderness Retreat on the following described property:

A tract of land in the south half of the southwest quarter of Section 25, Township 7 South, Range 21 east of the 6th P.M., Leavenworth County, Kansas.
more commonly known as 19190 Logan Road

WHEREAS, it is hereby found and determined that a request for a Special Use Permit as described above was filed with the Secretary of the Leavenworth County Planning Commission, on the 8th day of January, 2022, and

WHEREAS, it is hereby found that the Leavenworth County Planning Commission, after notice as required by law, did conduct a public hearing upon the granting of such request for a Special Use Permit on the 8th day of June, 2022; and

WHEREAS, it is hereby found that the Leavenworth County Planning Commission, based upon specific findings of fact incorporated by reference herein, did recommend that the Special Use Permit be approved, subject to special conditions as set forth; and

WHEREAS, the Board of County Commission considered, in session on the 29th Day of June, 2022, the recommendation of the Leavenworth County Planning Commission.

NOW, THEREFORE, BE IT RESOLVED by the Board of County Commission of Leavenworth County, Kansas, that:

1. Based upon the recommendation and findings of fact of the Leavenworth County Planning Commission; and,
2. Based upon the findings of fact adopted by the Board of County Commission in regular session on the 29th Day of June, 2022, and incorporated herein by reference;

That Case No. DEV-22-030, Special Use Permit for a Campground – Hidden Valley Wilderness Retreat approved subject to the following conditions:

1. The business shall operate from sunrise to sunset, but access to the cabins and campsites shall be 24 hours.
2. The SUP shall be limited to eight (8) employees other than the property owners.
3. The applicant shall provide a certificate of general liability insurance in the amount of \$1,000,000 and shall indicate Leavenworth County as the certificate holder prior to commencement of activities on the site.
4. No signage shall be allowed in the right-of-way. Sign permits shall be required for any on-site or off-site signage. The applicant shall provide an owner authorization form for any off-site signs. All signage shall comply with Article 25, Sign Regulations of the Leavenworth County Zoning and Subdivision Regulations.
5. No on-street parking shall be allowed.
6. The business shall be limited to 12 cabins and one campsite and a maximum occupancy of 26 overnight guests. A maximum occupancy of 36 guests for daily usage of the property.
7. Any noise generated from the proposed business shall be limited to 60 dB, as measured from the property line.
8. Any light generated from the proposed business shall be limited to 0.00 foot-candles, as measured from the property line.

9. All waste generated from the proposed business shall be disposed of in a manner that meets all local, state and federal requirements. An engineered septic system shall be required.
10. This SUP shall comply with all local, state, and federal rules and regulations that may be applicable.
11. The applicant shall obtain all applicable building permits prior to construction of any buildings.
12. The Special Use Permit shall be subject to the written narratives provided on February 24, 2022.
13. After approval of this SUP by the Board of County Commissioners all conditions listed shall be adhered to and copies shall be provided to the Planning and Zoning Office before the Special Use Permit shall take effect.

located in the south half of the southwest quarter of Section 25, Township 7 South, Range 21 east of the 6th P.M., Leavenworth County, Kansas.
more commonly known as 19190 Logan Road

Adopted this 29th day of June, 2022
Board of County Commission
Leavenworth, County, Kansas

Mike Smith, Chairman

ATTEST

Jeff Culbertson, Member

Janet Klasinski

Vicky Kaaz, Member

Doug Smith, Member

Mike Stieben, Member



Leavenworth County, KS

Media Conversion Agreement

Mark Lystiuk
Partner Relationship Manager
Office: (563) 345-1261
Mobile: (309) 236-8556
Email: markl@fidlar.com

Leavenworth County, KS

Statement of Work

Book Type	Range	# of Books
Older Subdivision Index Books		30
Newer Subdivision Index Books		40
Grantor/Grantee or Section Index Books		25
Official Record Books - Various	Vols. A-Z, 1-498	305
Mortgage Records Books - Various	Vols. A-Z, 1-320 -Various	219
Military Discharge Records - Rollfilm		5 Rolls
**DRIVE SPACE REQUIRED: 29.04GB		



Leavenworth County, KS Media Conversion Agreement

June 15th, 2022

Leavenworth County Register of Deeds
Ms. TerriLois Mashburn
300 Walnut Street
Leavenworth, KS 66048

Dear TerriLois,

The following provides the details of your upcoming scanning agreement.

As your current Land Records software vendor, we provide a 100% guarantee that all image and index file formats generated from this project are fully compatible with your Fidlar image database.

Fidlar will manage all aspects of this project from start to finish. Services include coordinating the necessary resources for scanning your books, conversion, enhancement of the images, grouping and naming of the appropriate pages of each book into individual documents, and importing all specified book records into your Fidlar AVID/Laredo system.

As your business partner, we greatly appreciate the opportunity to continue to provide you with the valued services and products you have come to expect from Fidlar. We look forward to adding additional value to your office, your constituents, and your abstract and title searchers.

Sincerely,

Mark Lystiuk
Partner Relationship Manager
Fidlar Technologies
Office: 563-345-1261
Mobile: 309-236-8556
Email: markl@fidlar.com



Investment Summary: Fidlar Services Description

✓ **Scan & Capture**

Professionally trained and qualified personnel, utilizing state-of-the-art scanning equipment and processes, will scan the books. During this phase, the following activities will occur: travel, configuration of scanning equipment and computer peripherals, inventory, inspection, handling and scanning, and content inspection. The end result is a set of digitized images that will be enhanced and imported into your system.

*Rollfilm will be processed off-site.

✓ **Image Cropping, Border Removal & Image Enhancements**

Utilizing customizable and automated image enhancement software, excess borders will be removed and the images will be enhanced into a usable state. Images will go through single inspection at 98.5% accuracy.

✓ **Grouping/Naming of Images**

The images will be grouped into unique documents and named with the appropriate document number. The accuracy of grouping/naming is 98.5%. AVID will offer the county the ability to manipulate images returned from their imaging project for cleanup purposes: moving, copying, splitting and deleting images.

Images that cannot be corrected using AVID and require further manipulation, will be done so at the county's expense.

✓ **Indexing Services (Optional, See Page 5)**

Check here if you would like to include CONDOR indexing services to this contract. If checked, yes, please reference and select the necessary type of indexing within the CONDOR Addendum.

✓ **Project Resources Management & Import**

Fidlar utilizes many resources in the management of the complete project from start to finish. This includes coordinating and scheduling all project resources, importation of all document images and document number index files into your Fidlar system, and configuring your Fidlar system for immediate access to newly imported documents via Laredo, Tapestry, and AVID. The imported documents will also be made available for back indexing in AVID if desired.





Presented to:

**Ms. TerriLois Mashburn – Register of Deeds
Leavenworth County, Kansas
300 Walnut St.
Leavenworth, KS 66048**

Presented by:



FIDLAR TECHNOLOGIES, INC.

January 28, 2021

Estimated Investment Summary: Professional Services Rendered

In exchange for products and services outlined in this Professional Services Agreement, Leavenworth County agrees to pay Fidlar Technologies the total amount due in the following payment schedule:

- ✓ **Scan, Capture, & Image Processing** **\$216,109.54**
 - **Includes Scanning, Image Cropping, Border Removal, Image Enhancements, Grouping/Naming of Images, Project Management & Import.**

TOTAL INVESTMENT **\$216,109.54**

***Totals are based on 24-hour on-site access for scanning (Estimated Days On-Site: 14).**

****Total Investment is based on estimated quantities. Final invoice will reflect actual quantities.**

Billing Milestones

1. 25% due upon signing of this Professional Services Agreement.
\$ 54,027.39
2. 50% due upon scanning completion.
\$ 108,054.77
3. Balance due upon completion of importing of documents/images (based on actual quantities of scanned and processed images), with prior approval by County Recorder if the total investment exceeds the estimate.
\$ 54,027.38 (**Estimated)

* Your final invoice will be charged based upon the final document count after grouping and naming. This charge may vary from the estimated count found during discovery.

These payments are not "deferred payments" under section 3.10 and are subject to County's statutory claims procedure.



Schedule "A" – Media Conversion Project

This Agreement is made this ___ day of _____, 2022, by and between FIDLAR TECHNOLOGIES, (FIDLAR) and LEAVENWORTH COUNTY, KS (the "CLIENT").

RECITALS

- A. FIDLAR provides various image archival services, all of which are hereinafter referred to as "ARCHIVAL SERVICES."
- B. CLIENT desires to purchase from FIDLAR image archival services for the purpose of indexing and imaging documents electronically.

TERMS OF AGREEMENT

In consideration of the facts mentioned above and the mutual promises set out below, the parties agree as follows:

ARTICLE I - GENERAL TERMS

- 1.1 ARCHIVAL SERVICES: CLIENT agrees to buy from FIDLAR, and FIDLAR agrees to sell to CLIENT, image archival service(s) described in the Image Archival Services Statement of Work, at the price quoted and subject to the terms of this Agreement. Article II describes the terms of this Agreement as it relates to the services.
- 1.2 ACCEPTANCE BY CLIENT: CLIENT agrees to accept the image archival services at the conclusion of the project referenced in the Image Archival Services Statement of Work. If CLIENT notifies FIDLAR of a material problem with the services within 30 days of installation and testing, FIDLAR will use its best efforts to correct such problems; otherwise, CLIENT will be conclusively presumed to have accepted the services upon completion of installation and testing.



Leavenworth County, KS Media Conversion Agreement

- 1.3 DELIVERY: FIDLAR will deliver the image archival services to CLIENT at CLIENT'S facility located at:

Ms. TerriLois Mashburn
Leavenworth County Register of Deeds
300 Walnut Street
Leavenworth, KS 66048

ARTICLE II – SERVICES PERFORMED

- 2.1 FIDLAR shall perform the work in accordance with currently approved methods and standards of practice in the image archival professional specialty.
- 2.2 All images, film, documents, books and other memoranda or writings relating to the work and services hereunder, shall remain or become the property of the CLIENT whether executed by or for FIDLAR for CLIENT and all such documents and copies thereof shall be returned or transmitted to CLIENT forth with upon CLIENT termination or completion of the work under this Agreement.

ARTICLE III

- 3.1 CONFIDENTIAL INFORMATION: FIDLAR and CLIENT agree that information designated in writing as proprietary by one party shall be held in confidence by the other party.
- 3.2 EXCLUSIVE REMEDY: CLIENT's exclusive remedy against FIDLAR for any breach of warranty under this Agreement is limited to repair, replacement or refund with respect to the item in question, at FIDLAR's option and subject to applicable law. CLIENT will only be entitled to the direct damages that CLIENT actually incurs in reasonable reliance, up to the amount of a refund of the price (plus sales tax) that CLIENT paid for the item. CLIENT will not be entitled to any incidental, consequential or other damages, including but not limited to damages for loss of profits or confidential or other information, for business interruption, for personal injury, for loss of privacy for failure to meet any duty including of good faith or of reasonable care, for negligence or negligent misrepresentation, and for any other pecuniary or other loss whatsoever, even in the event of the fault of FIDLAR (or any supplier), of tort (including negligence),



Leavenworth County, KS Media Conversion Agreement

strict or product liability, breach of agreement or breach of warranty, and even if FIDLAR or any supplier has been advised of the possibility of such damages. These limitations and exclusions regarding damages will apply even if any remedy fails.

- 3.3 WAIVER: Any waiver by either party of any provision of this Agreement shall not imply a subsequent waiver of that, or any other provision.
- 3.4 NOTICES: Any notices or demands required to be given herein shall be given to the parties in writing, and by mailing to the address hereinafter set forth, or to such other addresses as the parties may hereinafter substitute by written notice given in the manner prescribed in this Section.
- a. Notice to FIDLAR: Fidlar Technologies, Inc.
 350 Research Parkway
 Davenport, IA 52806
 Attn: Ernest Rikken, President
- b. Notice to CLIENT: Ms. TerriLois Mashburn
 Leavenworth County Register of Deeds
 300 Walnut Street
 Leavenworth, KS 66048
- 3.5 ENTIRE AGREEMENT: It is expressly agreed that this Agreement embodies the entire agreement and that there is no other oral or written agreement or understanding between the parties at the time of the execution hereunder. Further, this Agreement cannot be modified except by written agreement of all parties hereto.
- 3.6 GOVERNING LAW: The parties agree that this Agreement shall be governed by the laws of the State of Kansas.
- 3.7 BINDING EFFECT: This Agreement shall inure to the benefit of and bind the parties hereto, their successors and assigns.
- 3.8 AUTHORITY: FIDLAR and CLIENT each hereby warrant and represent that their respective signatures set forth below have been and are on the date of this Agreement duly authorized by all necessary and appropriate corporate and/or governmental action to execute this Agreement.



Leavenworth County, KS Media Conversion Agreement

- 3.9 SECTION HEADINGS: All section headings contained herein are for convenience or reference only and are not intended to define or limit the scope of any provision of this Agreement.
- 3.10 DEFERRED PAYMENT: To the extent that this Agreement includes deferred payments, such payments will include an imputed interest factor based on a current market rate. Deferred payments are defined as payments which extend beyond completion of the project installation and acceptance. Deferred payments are exempt from interest under the Installment Payment Agreement attached hereto and made a part hereof, except as may be provided for late charges as described in Section I of the Installment Payment Agreement.



Leavenworth County, KS Media Conversion Agreement

This Agreement has been executed by the parties as of the aforementioned date.

ACCEPTANCE AND AUTHORIZATION:

Leavenworth County may designate acceptance of this proposal by signature of a duly authorized officer of the company. Total costs for initial implementation and ongoing costs have been described herein.

In exchange for products and services outlined in this proposal, Leavenworth County agrees to pay Fidlar Technologies, the total amount due within 30 days from the date of invoice. Fidlar Technologies also reserves the right to collect monies owed in the event of nonpayment and recover any and all legal fees in addition to the unpaid balance.

ACCEPTED:

Ms. TerriLois Mashburn
Leavenworth County, KS
300 Walnut Street
Leavenworth, KS 66048

Print_____

Signature_____

Title_____

Date_____

ACCEPTED:

Fidlar Technologies
350 Research Parkway
Davenport, IA 52806

Print_____

Signature_____

Title_____

Date_____





CERTIFICATE OF LIABILITY INSURANCE

DATE (MM/DD/YYYY)

6/20/2022

THIS CERTIFICATE IS ISSUED AS A MATTER OF INFORMATION ONLY AND CONFERS NO RIGHTS UPON THE CERTIFICATE HOLDER. THIS CERTIFICATE DOES NOT AFFIRMATIVELY OR NEGATIVELY AMEND, EXTEND OR ALTER THE COVERAGE AFFORDED BY THE POLICIES BELOW. THIS CERTIFICATE OF INSURANCE DOES NOT CONSTITUTE A CONTRACT BETWEEN THE ISSUING INSURER(S), AUTHORIZED REPRESENTATIVE OR PRODUCER, AND THE CERTIFICATE HOLDER.

IMPORTANT: If the certificate holder is an ADDITIONAL INSURED, the policy(ies) must have ADDITIONAL INSURED provisions or be endorsed. If SUBROGATION IS WAIVED, subject to the terms and conditions of the policy, certain policies may require an endorsement. A statement on this certificate does not confer rights to the certificate holder in lieu of such endorsement(s).

PRODUCER Hub International Iowa dba Ruhl & Ruhl Insurance 212 Brady Street; Suite 4B Davenport IA 52801	CONTACT NAME: Laura A. Foust, CPCU, AAI, CISR, CRIS PHONE (A/C. No. Ext): 563 324 1981 FAX (A/C. No): 563 324 3410 E-MAIL ADDRESS: laura.foust@hubinternational.com														
	<table border="1"> <thead> <tr> <th>INSURER(S) AFFORDING COVERAGE</th> <th>NAIC #</th> </tr> </thead> <tbody> <tr> <td>INSURER A : Travelers Property Casualty Company of America</td> <td>25674</td> </tr> <tr> <td>INSURER B : Charter Oak Fire Insurance Company</td> <td>25615</td> </tr> <tr> <td>INSURER C :</td> <td></td> </tr> <tr> <td>INSURER D :</td> <td></td> </tr> <tr> <td>INSURER E :</td> <td></td> </tr> <tr> <td>INSURER F :</td> <td></td> </tr> </tbody> </table>		INSURER(S) AFFORDING COVERAGE	NAIC #	INSURER A : Travelers Property Casualty Company of America	25674	INSURER B : Charter Oak Fire Insurance Company	25615	INSURER C :		INSURER D :		INSURER E :		INSURER F :
INSURER(S) AFFORDING COVERAGE	NAIC #														
INSURER A : Travelers Property Casualty Company of America	25674														
INSURER B : Charter Oak Fire Insurance Company	25615														
INSURER C :															
INSURER D :															
INSURER E :															
INSURER F :															
INSURED Fidlarc Technologies, Inc. 350 Research Parkway Davenport IA 52806	FIDLACQ-01														

COVERAGES

CERTIFICATE NUMBER: 1836440184

REVISION NUMBER:

THIS IS TO CERTIFY THAT THE POLICIES OF INSURANCE LISTED BELOW HAVE BEEN ISSUED TO THE INSURED NAMED ABOVE FOR THE POLICY PERIOD INDICATED. NOTWITHSTANDING ANY REQUIREMENT, TERM OR CONDITION OF ANY CONTRACT OR OTHER DOCUMENT WITH RESPECT TO WHICH THIS CERTIFICATE MAY BE ISSUED OR MAY PERTAIN, THE INSURANCE AFFORDED BY THE POLICIES DESCRIBED HEREIN IS SUBJECT TO ALL THE TERMS, EXCLUSIONS AND CONDITIONS OF SUCH POLICIES. LIMITS SHOWN MAY HAVE BEEN REDUCED BY PAID CLAIMS.

INSR LTR	TYPE OF INSURANCE	ADDL INSD	SUBR WVD	POLICY NUMBER	POLICY EFF (MM/DD/YYYY)	POLICY EXP (MM/DD/YYYY)	LIMITS
A	<input checked="" type="checkbox"/> COMMERCIAL GENERAL LIABILITY <input type="checkbox"/> CLAIMS-MADE <input checked="" type="checkbox"/> OCCUR GEN'L AGGREGATE LIMIT APPLIES PER: <input checked="" type="checkbox"/> POLICY <input type="checkbox"/> PRO-JECT <input type="checkbox"/> LOC OTHER:			ZLP11N41030	7/15/2021	7/15/2022	EACH OCCURRENCE \$ 1,000,000 DAMAGE TO RENTED PREMISES (Ea occurrence) \$ 300,000 MED EXP (Any one person) \$ 10,000 PERSONAL & ADV INJURY \$ 1,000,000 GENERAL AGGREGATE \$ 2,000,000 PRODUCTS - COMP/OP AGG \$ 2,000,000 \$
B	AUTOMOBILE LIABILITY <input type="checkbox"/> ANY AUTO <input type="checkbox"/> OWNED AUTOS ONLY <input type="checkbox"/> SCHEDULED AUTOS <input checked="" type="checkbox"/> HIRED AUTOS ONLY <input checked="" type="checkbox"/> NON-OWNED AUTOS ONLY			BA2N21236819I5G	7/15/2021	7/15/2022	COMBINED SINGLE LIMIT (Ea accident) \$ 1,000,000 BODILY INJURY (Per person) \$ BODILY INJURY (Per accident) \$ PROPERTY DAMAGE (Per accident) \$ \$
A	<input checked="" type="checkbox"/> UMBRELLA LIAB <input checked="" type="checkbox"/> OCCUR <input type="checkbox"/> EXCESS LIAB <input type="checkbox"/> CLAIMS-MADE <input type="checkbox"/> DED <input checked="" type="checkbox"/> RETENTION \$ 10,000			CUP1L274289	7/15/2021	7/15/2022	EACH OCCURRENCE \$ 5,000,000 AGGREGATE \$ 5,000,000 \$
A	WORKERS COMPENSATION AND EMPLOYERS' LIABILITY ANY PROPRIETOR/PARTNER/EXECUTIVE OFFICER/MEMBER EXCLUDED? (Mandatory in NH) If yes, describe under DESCRIPTION OF OPERATIONS below	Y/N N	N/A	UB6K916026	7/15/2021	7/15/2022	<input checked="" type="checkbox"/> PER STATUTE <input type="checkbox"/> OTHER E.L. EACH ACCIDENT \$ 500,000 E.L. DISEASE - EA EMPLOYEE \$ 500,000 E.L. DISEASE - POLICY LIMIT \$ 500,000

DESCRIPTION OF OPERATIONS / LOCATIONS / VEHICLES (ACORD 101, Additional Remarks Schedule, may be attached if more space is required)

CERTIFICATE HOLDER**CANCELLATION**
 Leavenworth County Register of Deeds
 300 Walnut Street
 Leavenworth KS 66048

SHOULD ANY OF THE ABOVE DESCRIBED POLICIES BE CANCELLED BEFORE THE EXPIRATION DATE THEREOF, NOTICE WILL BE DELIVERED IN ACCORDANCE WITH THE POLICY PROVISIONS.

AUTHORIZED REPRESENTATIVE

© 1988-2015 ACORD CORPORATION. All rights reserved.